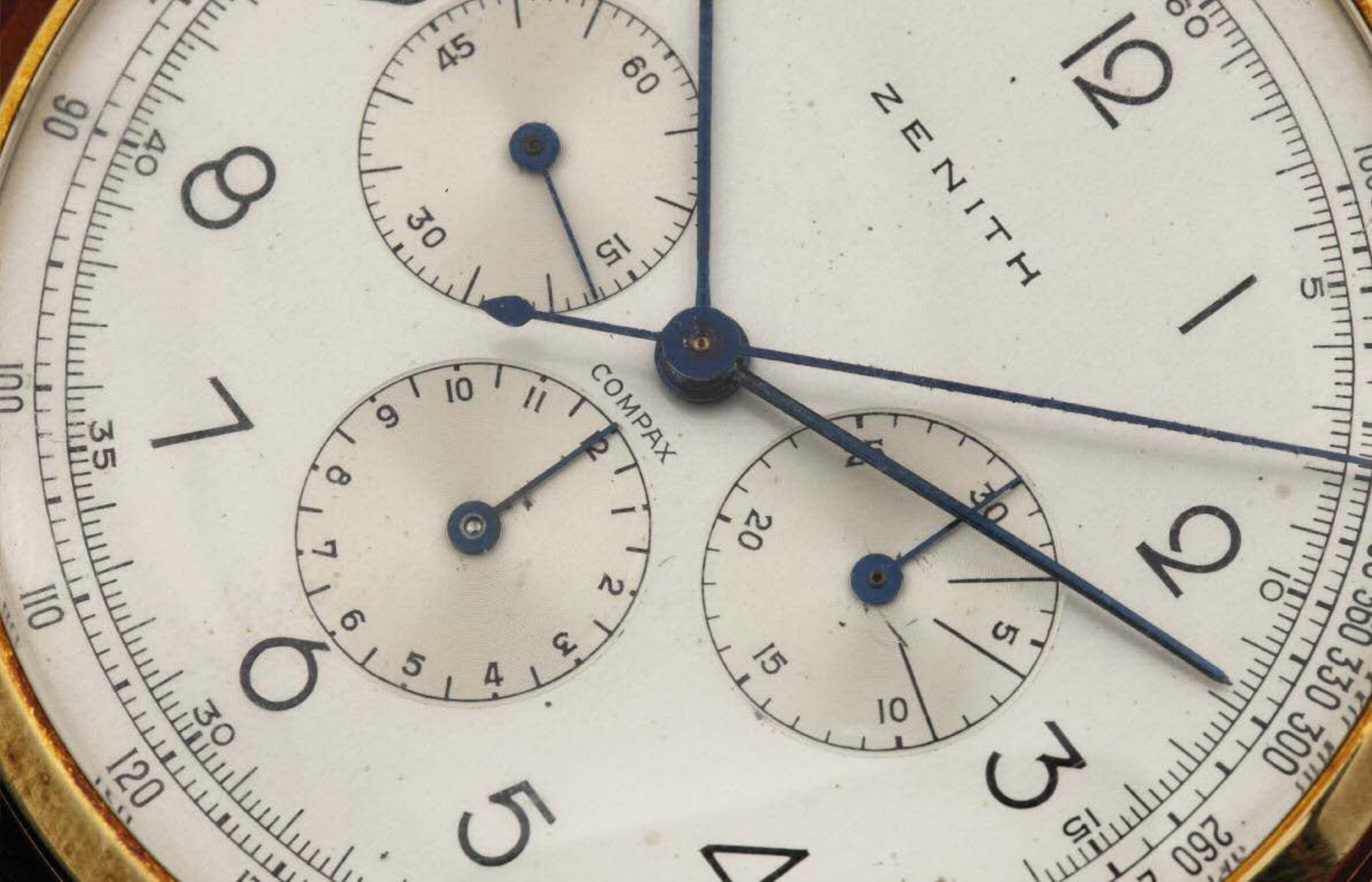


# WANNENES



MONTRES RARES

Monte-Carlo 20 Juillet 2023





lotto 495

# MONTRES RARES

MONTE-CARLO 20 JUILLET 2023

## WATCHES

MONTE-CARLO, 20 JULY 2023



**VENTE AUX ENCHÈRES AUCTION**  
Yacht Club de Monaco  
Quai Louis II  
98000 Monaco

**EXPOSITION - VIEWING MILANO**  
Palazzo Recalcati  
Via Amedei, 8  
20123 Milano

**MONTRES**  
**JEUDI 20 JUILLET**  
Thursday 20 July

**LUNDI 10 JUILLET**  
**MARDI 11 JUILLET**  
11h - 19h  
Monday 10 July  
Tuesday 11 July  
11 am to 7 pm

Première Session  
14h00 lots 401 - 448  
First Session  
2.00 pm lots 401 - 448

Sur rendez-vous  
By appointment



Deuxième Session  
15h00 lots 449 - 555  
Second Session  
3.00 pm lots 449 - 555

**YACHT CLUB DE MONACO**  
**SAMEDI 15 JUILLET**  
15h - 20h  
Saturday 15 July  
3pm to 8pm

**DU DIMANCHE 16 JUILLET**  
**AU MERCREDI 19 JUILLET**  
10h - 13h et 14h - 20h  
From Sunday 16 July  
To Wednesday 19 July  
10am to 1pm & 2pm - 8pm

**JEUDI 20 JUILLET**  
10h - 12h  
Thursday 20 July  
10am to 12am

Les lots précédés d'un symbole \*:  
Pour cette vacation, un CITES de ré-export et un CITES d'import ont été délivrés à la fois par les autorités française et monégasque pour l'utilisation commerciale de ce spécimen à Monaco. Pour une sortie de l'UE, un CITES de ré-export sera nécessaire, celui-ci étant à la charge du futur acquéreur.  
Après la vente l'acquéreur est prié de contacter des services administratifs compétents pour une demande de CITES d'export de Monaco puis d'import dans le pays de l'UE où il réside.  
Les lots pourront être expédiés qu'aux adresses situées à Monaco ou bien pourront être retirés auprès notre siège situé à l'adresse 6, avenue Saint Michel Monaco.  
For this auction, CITES re-export and CITES import permits were issued by both the French and Monegasque authorities for the commercial use of this specimen in Monaco. The purchaser of this specimen must apply to the relevant administrative departments for a CITES re-export or CITES import permit if the specimen leaves the EU.  
Therefore any purchaser, residing in the EU will be able to apply to the relevant administrative department, for a CITES of export from Monaco, an then a CITES import in the EU.  
The lots can only be shipped to addresses within Monaco or may be collected from our offices in Avenue Saint Michel 6.

Les lots précédés d'un symbole S  
L'utilisation de ce spécimen est libre dans l'UE. Cependant la Principauté de Monaco n'est pas considérée comme faisant partie de l'UE lors de la vente d'objets contenant en partie ou en totalité des spécimens visés par la Convention de Washington, en conséquence, tout acheteur résident dans l'UE pourra solliciter, après la vente, auprès des services administratifs compétents une demande de CITES d'export de Monaco puis d'import dans le pays de l'UE où il réside.  
Commercial use of this specimen is authorized in the EU. However, Monaco is not considered as part of the EU for any sale of goods containing of made of this specimen. Therefore, any purchaser, residing in the EU will be able to apply to the relevant administrative department, for a CITES of export from Monaco, and then a CITES import in the EU.

Les bracelets des lots indiquées sur le catalogue ne seront pas présentés lors de l'exposition à Monaco pour le règlements Cites, mais ils sont à votre disposition auprès notre bureau de Milan - à l'adresse Via Amedei, 8 sur rendez-vous.  
The straps of the indicated lots on the catalogue will not be displayed during the exhibition in Monaco as for Cites regulations, but can be at customer's disposal in our Milan Office - Via Amedei, 8 by appointment.

Par le ministère de Maître Claire Notari, Huissier à Monaco  
By the Ministry of Claire Notari Bailiff in Monaco

## WANNENES en partenariat avec Art Contact

Cover:  
Lots 536

La participation à la Vente aux enchères implique l'acceptation pleine et inconditionnelle des Conditions Générales de Vente contenues dans ce catalogue.  
Les lots peuvent être retirés à partir de lundi 24 Juillet uniquement sous réserve de rendez-vous par téléphone au +377 99 90 46 26  
Taking part in the Auction implies the entire and unconditional acceptance of the Conditions of Sale outlined in this Catalogue.  
The lots may be collected from Monday 24 July, by telephone appointment calling +377 99 90 46 26

# WANNENES

## GÈNES

Villa Carrega Cataldi  
Via Albaro 11  
16145 Genova  
Tel. +39 010 2530097

## MILAN

Palazzo Recalcati  
Via Amedei, 8  
20123 Milano  
+39 02 72023790

## ROME

Via Fulcieri Paulucci de Calboli, 6  
00195 Roma  
+39 06 69200565

## MONTE CARLO

Villa Celine  
6, Avenue Saint Michel  
98000 Monaco  
+377 99 90 4626

## BOARD

**GUIDO WANNENES**  
CEO  
g.wannenes@wannenesgroup.com

**STEFANO DELLA CROCE DI DOJOLA**  
Directeur Financier  
s.dellacroce@wannenesgroup.com

**MAURIZIO PIUMATTI**  
Directeur Général  
m.piumatti@wannenesgroup.com

**LUCA MELEGATI**  
Directeur Bureau Milan  
l.melegati@wannenesgroup.com

## BUSINESS DEVELOPMENT

**MARTA BRIVIO SFORZA**  
Business Development  
m.briviosforza@wannenesgroup.com

## STAFF

<b>Giulia Wannenes</b> Responsable Qualité g.checcucci@wannenesgroup.com	<b>Luca Viòlo</b> Media & Communication l.violo@wannenesgroup.com	<b>Alessia Arnaldi</b> Service Valuation a.arnaldi@wannenesgroup.com
<b>Chiara Guiducci</b> Responsable Service Clients c.guiducci@wannenesgroup.com	<b>Adele Occhetti</b> Service Client Gènes a.occhetti@wannenesgroup.com	<b>Camilla Aloi</b> Service Client Gènes info@wannenesgroup.com
<b>Ilaria De Pian</b> Service Client Milan i.depian@wannenesgroup.com	<b>Alessandra Corno</b> Service Client Milan a.corno@wannenesgroup.com	<b>Anna Maria Giarrusso</b> Service Client Rome a.giarrusso@wannenesgroup.com
<b>Barbara Baiardi</b> Administration b.baiardi@wannenesgroup.com	<b>Luciana Moratti Colonna</b> Administration l.moratti@wannenesgroup.com	<b>Nicole Balestrero</b> Service Client Gènes n.balestrero@wannenesgroup.com
<b>Alessandro Vigo</b> IT Manager a.vigo@wannenesgroup.com	<b>Luca Redenti</b> Responsable Salle de Vente	<b>Lorenzo Colonna</b> Expéditions et livraisons Gènes
<b>Gianluca Cuneo</b> Expéditions et livraisons Gènes	<b>Yuri Lo Nobile</b> Expéditions et livraisons Gènes	<b>Dan Ungureanu</b> Expéditions et livraisons Milan

## REPRÉSENTANTS

**Liguria**  
Paola Bertolini  
+39 366 4589615  
p.bertolini@wannenesgroup.com

**Lombardia**  
Benedetta Gallizia di Vergano  
+39 347 9023645  
b.gallizia@wannenesgroup.com

**Piemonte**  
Chiara Benevolo Caroni  
+39 351 0687570  
c.benevolo@wannenesgroup.com

**Puglia**  
Francesco Petrucci  
+39 348 5101534  
f.petrucci@wannenesgroup.com

**Sicilia**  
Riccardo Vitali  
+39 345 0779118  
r.vitali@wannenesgroup.com

**Toscana**  
Cecilia Brunner Muratti  
+39 335 6237244  
c.brunnermuratti@wannenesgroup.com

**Veneto**  
Christiane d'Albis  
+39 338 9339811  
c.dalbis@wannenesgroup.com

**France**  
Claudia Pucci di Benisichi  
+33 607 868050  
c.pucci@wannenesgroup.com

**Royaume-Uni**  
Federica Della Rocca  
+44 7899 790460  
f.dellarocca@wannenesgroup.com

# Art Contact

## MONTE-CARLO

6, avenue Saint Michel,  
98000 Monaco  
Tél +377 99 90 46 26  
info.monaco@wannenesgroup.com

## SERVICE CLIENTS

Client Services  
  
Ekaterina Gulyakina  
e.gulyakina@wannenesgroup.com

## INFORMATIONS CONCERNANT LA VENTE

AUCTION ENQUIRIES AND INFORMATION

## SPÉCIALISTES

SPECIALISTS IN CHARGE

## Horlogerie / Watches

Giacomo Cora  
g.cora@wannenesgroup.com

Michele Rosa  
m.rosa@wannenesgroup.com

## ADMINISTRATION - SERVICE CLIENTS

### ORDRES D'ACHAT - ENCHÈRES PAR TÉLÉPHONE

ADMINISTRATION - CLIENT SERVICE  
ABSENTEE BIDS - PHONE BIDS  
Ekaterina Gulyakina  
+377 99 90 46 26  
e.gulyakina@wannenesgroup.com

### ÉTAT DE CONSERVATION CONDITION REPORTS

Tél. +377 99 90 46 26  
info.monaco@wannenesgroup.com

### RÉSULTATS DE LA VENTE AUCTION RESULTS

Ekaterina Gulyakina  
+377 99 90 46 26  
info.monaco@wannenesgroup.com



lotto 530



**ARGENTI, AVORI, ICONE  
E OGGETTI D'ARTE RUSSA**  
Tommaso Teardo  
t.teardo@wannenesgroup.com



**ARTE MODERNA  
E CONTEMPORANEA**  
Guido Vitali  
g.vitali@wannenesgroup.com

Pier Matteo Carnaroli  
p.carnaroli@wannenesgroup.com



**ASIAN ART**  
Alessandra Pieroni  
a.pieroni@wannenesgroup.com



**CERAMICHE E VETRI**

Luca Melegati  
l.melegati@wannenesgroup.com

**MOBILI, SCULTURE E OGGETTI D'ARTE**

Mauro Tajocchi  
m.tajocchi@wannenesgroup.com  
Francesco Marchiaro  
Junior specialist Mobili, Sculture, Oggetti d'Arte, Ceramiche e Vetri  
f.marchiaro@wannenesgroup.com



**CLASSIC & SPORTS CARS**  
Damiano Fianco  
d.fianco@wannenesgroup.com



**DESIGN**

Andrea Schito  
a.schito@wannenesgroup.com

Giacomo Abate  
g.abate@wannenesgroup.com



**DIAGNOSTICA E RICERCA SCIENTIFICA**  
Michela Fasce  
m.fasce@wannenesgroup.com

**DIPINTI ANTICHI**

Antonio Gesino  
a.gesino@wannenesgroup.com

**DIPINTI DEL XIX SECOLO**

Rosanna Nobilitato  
r.nobilitato@wannenesgroup.com

Margherita Calabrò  
Junior Specialist Dipinti Antichi e del XIX Secolo  
m.calabro@wannenesgroup.com



**GIOIELLI**  
Benedetta Romanini  
b.romanini@wannenesgroup.com

Teresa Scarlata  
t.scarlata@wannenesgroup.com



**OROLOGI**  
Giacomo Cora  
g.cora@wannenesgroup.com

Michele Rosa  
Art Contact - Monaco  
m.rosa@wannenesgroup.com



**LIBRI RARI E MANOSCRITTI**

Riccardo Crippa  
r.crippa@wannenesgroup.com

**MONETE E MEDAGLIE**

Daniele Ricci  
d.ricci@wannenesgroup.com

**FILATELIA**

Maurizio Piumatti  
m.piumatti@wannenesgroup.com



**TAPPETI E TESSUTI ANTICHI**

David Sorgato  
d.sorgato@wannenesgroup.com



**WINE & SPIRITS**  
Alessio Leonardi  
Junior Specialist  
a.leonardi@wannenesgroup.com



PREMIÈRE SESSION  
JEUDI 20 JUILLET 2023, 14H00  
LOTTI 401 - 448

FIRST SESSION  
THURSDAY 20 JULY 2023 AT 2.00PM  
LOTS 401 - 448

lot 426





**401.**  
PIAGET MONTRE BRACELET, EN OR GRIS - Vers 1970

Reference N° 9231 p56  
Serial N° 92219  
Year: 1970  
Material: 18k White gold  
Weight: 67g  
Dimensions: 23mm x 17cm  
Caliber: Manual  
Crystal: Mineral  
Bracelet: Integrated in 18k white gold

€ 3.000 - 4.000

Classic and in very good conditions Piaget lady bracelet, actually working.



**402.**  
PIAGET LADY, EN OR JAUNE - Vers 1960

Reference N° 925 B11  
Serial N° 151459  
Year: 1960  
Material: 18k yellow gold  
Weight: 48g  
Dimensions: 24mm x 16cm  
Caliber: Manual  
Crystal: Mineral  
Bracelet: Integrated 18k yellow gold

€ 1.300 - 1.900

Elegant and in good conditions lady bracelet Piaget, dial with some marks, actually working.





**403.**  
OMEGA CONSTELLATION, EN OR BLANC - Vers 1980

Reference N° 8259  
Serial N° 717557  
Year: 1980  
Material: 18k White gold  
Weight: 59g  
Dimensions: 30mm  
Caliber: Manual  
Crystal: Sapphire  
Bracelet: Integrated white gold  
Accessories: Original box

€ 1.500 - 2.500

Very elegant lady variant of Constellation, actually working.

**405.**  
LONGINES LADY, EN OR GRIS ET DIAMANTS - Vers 1960

Year: 1960  
Material: 18k white gold and diamonds  
Weight: 25.5g  
Dimensions: 17mm  
Caliber: Manual  
Crystal: Plexiglas  
Bracelet: Integrated 18k white gold

€ 1.200 - 1.600

Fine and elegant lady Longines bracelet actually working.



**404.**  
LONGINES LADY, EN OR ET DIAMANTS - Vers 1970

Serial N° 40761  
Year: 1970  
Material: 18k white gold  
Weight: 45g  
Dimensions: 14mm x 17cm  
Caliber: Manual, cal. 410  
Crystal: Mineral  
Bracelet: Integrated 18k white gold

€ 800 - 1.200

Classic and in very good conditions Longines lady bracelet, actually working.

**406.**  
ROLEX PRECISION, EN OR ET DIAMANTS - Vers 1964

Year: 1964  
Material: 18k White gold and diamonds  
Weight: 40g.  
Dimensions: 15mm x 16,5cm  
Caliber: Manual  
Crystal: Mineral  
Bracelet: Integrated 18k white gold  
Accessories: Original warranty dated 12/12/1964

€ 1.300 - 1.700

Very beautiful lady bracelet Rolex with guarantee, actually not working service will be needed.







**407.**  
ROLEX DATE, RÉF 6516, EN OR ET ACIER - Vers 1966

Reference N° 6516  
Serial N° 150\*\*60  
Year: 1966  
Material: Steel and Gold  
Dimensions: 24mm  
Caliber: Rolex Automatic  
Crystal: Plexiglas  
Bracelet: Steel and Gold

€ 1.500 - 2.000

Watch in original good condition, currently working.



**408.**  
ROLEX DATE, RÉF. 6917, EN OR ET ACIER - Vers 1977

Reference N° 6917  
Serial N° 5028436  
Year: 1977  
Material: Stainless steel and gold  
Dimensions: 25mm  
Caliber: Automatic  
Crystal: Plexiglas  
Bracelet: Stainless steel and gold

€ 2.400 - 2.600

Classic lady Date by Rolex, in good and actually working conditions.

**409.**  
ROLEX OYSTER PERPETUAL, RÉF. 6618, EN OR JAUNE - Vers 1960

Reference N° 6618  
Serial N° 506391  
Year: 1960  
Material: 18k Yellow gold  
Weight: 23g  
Dimensions: 24mm  
Caliber: Automatic  
Crystal: Plexiglas  
Bracelet: Leather with Rolex gold plated buckle

Offered with no reserve price

€ 600 - 800

Very nice and in very good conditions lady Oyster Rolex from 60's, actually working.



**410.**  
ROLEX PRECISION LADY, EN OR JAUNE - Vers 1950

Serial N° 9168  
Year: 1950  
Material: 18k Yellow gold  
Weight: 11g  
Dimensions: 20mm  
Caliber: Manual, cal. Precision, 17 jewels  
Crystal: Plexiglas  
Bracelet: Leather with Rolex gold plated buckle

€ 800 - 1.200

Actually working, beautiful champagne dial, watch in very good conditions.





**411.**  
PIAGET OVALE MALACHITE, EN OR JAUNE - Vers 1960

Reference N° 9861  
Serial N° 141808  
Year: 1960  
Material: 18k Yellow gold  
Weight: 32g  
Dimensions: 24mm x 31mm  
Caliber: Manual  
Crystal: Mineral  
Bracelet: leather with gold deploying buckle

€ 900 - 1.100

Very elegant and charming lady Piaget Ovale, with very good condition malachite dial, currently working conditions.



**413.**  
PIAGET RECTANGLE, RÈF. 9228, EN OR GRIS - Vers 1970

Reference N° 9228  
Serial N° 183672  
Year: 1970  
Material: 18K white gold  
Weight: 61g  
Dimensions: 23mm x 16.7 cm  
Caliber: Manual  
Crystal: Plexiglas  
Bracelet: Integrated 18k white gold

€ 1.500 - 1.800

Very elegant and charming Piaget Rectangle, Beautiful contrast between the white gold and the lapis lazuli dial, which has some cracks, currently working.



**412.**  
PIAGET OCTAGONAL OEIL DE TIGRE, EN OR JAUNE - Vers 1960

Reference N° 9341  
Serial N° 200675  
Year: 1960  
Material: 18k Yellow gold  
Weight: 30g  
Dimensions: 23mm x 26 mm  
Caliber: Manual  
Crystal: Mineral  
Bracelet: leather with gold deploying buckle

€ 900 - 1.100

Very elegant and charming lady Piaget Octagonal, with very good condition tiger eye dial and case, currently working conditions.





**414.**

OMEGA DE VILLE "JEUX D'ARGENT" EN OR BLANC, Vers 1970

Reference N° 8270

Serial N° C5\*\*\*3

Year: 1970

Material: 18k white gold

Weight: 116g.

Dimensions: 37 x 20mm

Caliber: Manual

Crystal: Rock crystal

Bracelet: White gold designed by Andrew Grima

€ 10.000 - 15.000

In the 1970s Omega created a line of watches called Jeux d'Argent, and it was precisely in that period that this splendid specimen was born from the design of the famous jewelry designer Andrew Grima. This beautiful large size watch is lightened with the motif of branches and sea increasing this effect with the splendid contrast of the white gold with the blue dial. The watch is in superb condition, hardly ever worn, with very sharp edges and hallmarks visible without a loupe. It can be said, a truly unique Omega.





**415.**  
UNIVERSAL GENÈVE, EN OR JAUNE - Vers 1960

Reference N° 6998  
Serial N° 723233  
Year: 1960  
Material: 18k Yellow gold  
Weight: 53g  
Dimensions: 24mm x 17cm  
Caliber: Manual  
Crystal: Plexiglas  
Bracelet: Integrated 18k yellow gold

€ 900 - 1.200

Very nice and unusual Universal Genève from 60s, actually working.

**417.**  
VAN CLEEF & ARPELS, EN OR 18K - Vers 1990

Reference N° 13607  
Serial N° 35062  
Year: 1990  
Material: 18K Yellow gold  
Weight: 30g  
Dimensions: 23mm  
Caliber: Quartz  
Crystal: Sapphire  
Bracelet: Leather with deploying gold buckle

€ 1.500 - 2.000

Very iconic Van Clef & Arpels gold lady watch, battery needs to be replaced (the functioning of the quartz movements is not guaranteed as the conditions of sale, assistance or repair may be required).



**416.**  
UNIVERSAL GENÈVE DISCO VOLANTE, EN OR JAUNE - Vers 1950

Serial N° 607140 24  
Year: 1950  
Material: 18k Yellow gold  
Weight: 17g  
Dimensions: 29mm  
Caliber: Manual  
Crystal: Plexiglas  
Bracelet: Leather with metal buckle

€ 600 - 800

Watch in original good condition, currently working.

**418.**  
TIFFANY & CO. MONTRE, EN OR 14K - Vers 1950

Year: 1950  
Material: 14k Yellow gold  
Weight: 22g  
Dimensions: 31mm  
Caliber: Manual  
Crystal: Plexiglas  
Bracelet: Leather with metal buckle

€ 1.000 - 1.500

Interesting 14k gold watch created by Tiffany & Co. probably in the 1950s, in working order and with a nice patina. Service may be expected.





**419.**  
MAURICE LACROIX MASTERPIECE TRIPLE CALENDAR AND MOON PHASE, EN ACIER - Vers 2000

Reference N° MP 6066  
Serial N° AK 13314  
Year: 2000  
Material: Stainless steel and diamonds  
Dimensions: 35mm  
Caliber: Automatic  
Crystal: Sapphire  
Bracelet: Leather with stainless steel buckle

€ 2.000 - 3.000

This attractive Maurice Lacroix ladies watch combines mother-of-pearl, a white metal case, and diamonds. The triple calendar and moon phase functions are useful and make for an attractive dial. Actually working and in good conditions.



**421.**  
ROLEX OYSTER ROYAL PRECISION, EN ACIER - Vers 1950

Year: 1950  
Material: Stainless steel  
Dimensions: 29mm  
Caliber: Manual  
Crystal: Plexiglas  
Bracelet: Stainless steel

€ 600 - 800

In good conditions and actually working, service may be expected.



**420.**  
JAQUET-DROZ MONTRE EN ACIER - Vers 1970

Year: 1970  
Material: Steel Chrome  
Dimensions: 30 x 37 mm  
Caliber: Manual  
Crystal: Plexiglass  
Bracelet: Leather with stainless steel buckle

O.I.

Watch in very good conditions, currently working



**422.**  
ROLEX OYSTER PERPETUAL, RÉF. 6748, EN ACIER - Vers 1973

Reference N° 6748  
Serial N° 3573990  
Year: 1973  
Material: Stainless steel  
Dimensions: 29mm  
Caliber: Automatic  
Crystal: Plexiglas  
Bracelet: Stainless steel

€ 1.800 - 2.200

In good conditions and actually working, service may be expected.



**423.**  
ZENITH CAPTAIN, EN ACIER - Vers 1980

Reference N° 19.0990.106  
Serial N° 4190994106  
Year: 1980  
Material: Stainless steel  
Dimensions: 25mm  
Caliber: Quartz  
Crystal: Mineral  
Bracelet: Stainless steel  
Accessories: Original tag

O.I.

Watch in like new conditions, comes from an old stock, actually not working battery needs to be replaced (the functioning of the quartz movements is not guaranteed as the conditions of sale, assistance or repair may be required).



**425.**  
ROLEX DATEJUST, RÉF. 7917, EN OR JAUNE - Vers 1978

Reference N° 7917  
Serial N° 541\*\*95  
Year: 1978  
Material: 18k yellow gold  
Weight: 60,5g  
Dimensions: 25mm  
Caliber: Automatic  
Crystal: Plexiglas  
Bracelet: 18k yellow gold Rolex "President"  
Accessories: Original box and warranty, dated 07/06/1978

€ 3.800 - 4.200

Splendid lady President Datejust with blue dial, with marks and losses. Actually working



**424.**  
ROLEX DATEJUST, RÉF. 6917, EN OR JAUNE - Vers 1978

Reference N° 6916  
Serial N° 550\*\*93  
Year: 1978  
Material: 18k yellow gold  
Weight: 55g  
Dimensions: 25mm  
Caliber: Automatic  
Crystal: Plexiglas  
Bracelet: 18k yellow gold

€ 2.800 - 3.200

Jubilee gold lady Datejust in good and working conditions.





**426.**  
CARTIER MONTRE PENDENTIF, EN OR, PLATINE, JADE ET DIAMANTS - Vers 1920

Year: 1910/20  
Material: Gold, platinum, jade and diamonds  
Weight: 23g  
Dimensions: 25mm x 15mm  
Caliber: Manual  
Crystal: Mineral  
Accessories: 18k gold extra-long chain 105cm x 28g

€ 16.000 - 22.000

Beautiful and extremely rare pocket necklace watch by Cartier, the details of the jade is incredibly well preserved and without damage, the attachment for the chain is made of platinum and diamonds joined by a splendid rock crystal. The yellow gold watch case is finely decorated with diamonds and black enamel, some defects on the bezel, the dial is preserved in excellent original condition, and the watch works incredibly if wound. Belonging to the same family for more than 50 years, this probably unique piece is a fantastic example of Art Deco watches by Cartier in the early 1900s.

In France: BTÉ SGDG <sup>a</sup> is the abbreviation of "Breveté sans garantie du gouvernement" a legal notice releasing the state from any responsibility for the proper functioning of the patented device. This mention was established by the law of July 5, 1844 art. 331, which provides that patents are issued "without prior examination, at the plaintiffs' own risk, and without warranty either as to the reality, novelty or merit of the invention, or as to the faithfulness or accuracy of the the description.

The text of the law of 1844 is originally the invention of Napoleon Bonaparte, according to the decree of September 27, 1803.

But these provisions desired by Napoleon had antecedents in a law voted by the Constituent Assembly on January 7, 1791, which guarantees the inventor the monopoly of the manufacture of his invention for fifteen years. This mention disappeared in 1968. C. Wikipedia





**427.**  
ZENITH PACIFIC, EN ACIER - Vers 1980

Reference N° 69.0020.615  
Serial N° 4890022615  
Year: 1980  
Material: Stainless steel and gold  
Dimensions: 32mm  
Caliber: Quartz  
Crystal: Plexiglas  
Bracelet: Stainless steel and gold  
Accessories: Original tag

O.I.

Watch in like new conditions, comes from an old stock, actually not working battery needs to be replaced (the functioning of the quartz movements is not guaranteed as the conditions of sale, assistance or repair may be required).



**428.**  
ZENITH ESPADA, EN ACIER - Vers 1980

Reference N° 59.0280.337  
Serial N° 4590283337  
Year: 1980  
Material: Stainless steel  
Dimensions: 34mm  
Caliber: Quartz  
Crystal: Plexiglas  
Bracelet: Stainless steel  
Accessories: Original tag

O.I.

Watch in like new conditions, comes from an old stock, actually not working battery needs to be replaced (the functioning of the quartz movements is not guaranteed as the conditions of sale, assistance or repair may be required).

**429.**  
BAUME & MERCIER TROIS TONS, EN ACIER - Vers 1991

Reference N° 1830  
Serial N° 5739.038 / 1344554  
Year: 1991  
Material: Stainless steel  
Dimensions: 24mm x 18cm  
Caliber: Quartz  
Crystal: Mineral  
Bracelet: Integrated stainless steel

€ 300 - 600

Very good conditions, worn few times, battery needs to be replaced (the functioning of the quartz movements is not guaranteed as the conditions of sale, assistance or repair may be required).



**430.**  
GIRARD PERREGAUX QUARTZ CHRONOMETER, EN ACIER ET OR JAUNE - Vers 1980

Reference N° 4383 BO  
Serial N° 18260  
Year: 1980  
Material: Stainless steel and gold  
Weight: 61g (included stainless steel case)  
Dimensions: 26mm  
Caliber: Quartz  
Crystal: Mineral  
Bracelet: 18k yellow and white gold

€ 700 - 900

Stainless steel watch by Girard Perregaux in good condition, with 18k bracelet, battery needs to be replaced (the functioning of the quartz movements is not guaranteed as the conditions of sale, assistance or repair may be required).







**431.**  
CHANEL MONTRE EN ACIER - Vers 2023

Reference N° 55840  
Year: 2020  
Material: Stainless steel  
Dimensions: 21 x 27mm  
Caliber: Quartz  
Crystal: Sapphire  
Bracelet: Leather with stainless steel buckle  
Accessories: Original box and warranty

O.I.

Very good conditions, never worn or few times.



**432.**  
BVLGARI BVLGARI Bzero1, RÉF. BZ 22 S, EN ACIER - Vers 1997

Reference N° BZ 22 S  
Serial N° 16\*\*26  
Year: 1997  
Material: Stainless steel  
Dimensions: 22mm  
Caliber: Quartz  
Crystal: Mineral  
Bracelet: Stainless steel signed Bvlgari  
Accessories: Box and guarantee

€ 800 - 1.200

Good condition and with original papers, battery needs to be replaced (the functioning of the quartz movements is not guaranteed as the conditions of sale, assistance or repair may be required).



**433.**  
BVLGARI BVLGARI, RÉF. BB26GL, EN OR JAUNE - Vers 1980

Reference N° BB 26 GL  
Serial N° F1\*\*\*\*52  
Year: 1980  
Material: 18k Yellow gold  
Weight: 30g.  
Dimensions: 26mm  
Caliber: Quartz  
Crystal: Mineral  
Bracelet: Leather with stainless steel buckle  
Accessories: With papers

€ 1.000 - 1.500

Good condition and with original papers, battery needs to be replaced (the functioning of the quartz movements is not guaranteed as the conditions of sale, assistance or repair may be required).





**434.**

CARTIER TANK, EN OR JAUNE - Vers 1990

Serial N° 780877331  
Year: 1990  
Material: 18k Yellow gold  
Weight: 19.5g  
Dimensions: 20mm  
Caliber: Manual  
Crystal: Sapphire  
Bracelet: Leather with stainless steel buckle

€ 1.200 - 1.500

Classic and elegant Cartier Tank, actually working.

**436.**

JAEGER-LECOULTRE IDEALE, EN ACIER, Vers 2000

Reference N° 460.8.86  
Serial N° 923111119  
Year: 2000  
Material: Stainless steel and diamonds  
Dimensions: 17 x 40m  
Caliber: Manual  
Crystal: Mineral  
Bracelet: Leather with deploying

€ 1.100 - 1.500

Nice and ideal as the model name Jaeger-LeCoultre in good conditions, actually working.



**435.**

CARTIER SANTOS, EN OR ET ACIER - Vers 1980

Reference N° 07922  
Serial N° 187957  
Year: 1980  
Material: Stainless steel and gold  
Dimensions: 30mm  
Caliber: Quartz  
Crystal: Sapphire  
Bracelet: Stainless steel and gold

€ 1.800 - 2.500

Classic and iconic Santos actually working.

**437.**

JAEGER-LECOULTRE ETRIER, EN ACIER - Vers 1960

Serial N° 1096912  
Year: 1960  
Material: Stainless steel  
Dimensions: 20mm  
Caliber: Manual  
Crystal: Plexiglas  
Bracelet: Leather with stainless steel buckle

€ 600 - 800

Iconic design Jaeger-LeCoultre watch actually working





**438.**  
AUDEMARS PIGUET ROYAL OAK, EN ACIER - Vers 1980

Reference N° 8638ST  
Serial N° 347  
Year: 1980  
Material: Stainless steel  
Dimensions: 29mm  
Caliber: Automatic  
Crystal: Sapphire  
Bracelet: Stainless steel

€ 4.500 - 5.500

Beautiful lady stainless steel Royal Oak by Audemars Piguet, actually working.



**439.**  
AUDEMARS PIGUET ROYAL OAK, EN OR JAUNE - Vers 1980

Reference N° 8638BA  
Year: 1980  
Material: 18k yellow gold  
Weight: 121g  
Dimensions: 29mm  
Caliber: Automatic  
Crystal: Sapphire  
Bracelet: 18k yellow gold

€ 5.000 - 7.000

Beautiful lady 18k yellow gold Royal Oak by Audemars Piguet, actually working.





**440.**  
PIAGET OEIL DE TIGRE, EN OR GRIS - Vers 1960

Reference N° 9015  
Serial N° 208714  
Year: 1960  
Material: 18k Yellow gold  
Weight: 27g  
Dimensions: 27mm  
Caliber: Manual  
Crystal: Mineral  
Bracelet: leather with gold deploying buckle

€ 800 - 1.200

Very elegant and charming lady Piaget, with very good condition tiger eye dial, currently working conditions.

**442.**  
PIAGET RÈF. 9015, EN OR JAUNE - Vers 1989

Reference N° 9015  
Serial N° 512346  
Year: 1989  
Material: 18k Yellow gold  
Weight: 22g  
Dimensions: 27mm  
Caliber: Manual  
Crystal: Mineral  
Bracelet: leather with gold deploying buckle  
Accessories: original pochette, warranty and additional bracelet

€ 1.000 - 1.500

Very beautiful conditions actually working and full set with additional strap.



**441.**  
PIAGET, EN OR JAUNE - Vers 1970

Reference N° 9025  
Serial N° 352976  
Year: 1970  
Material: 18k yellow gold  
Weight: 22g  
Dimensions: 29mm  
Caliber: Manual  
Crystal: Sapphire  
Bracelet: leather with gold buckle  
Accessories: Original pochette

€ 700 - 900

Watch in original good condition, worn few times, currently working.

**443.**  
GIRARD PERREGAUX EQUATION ESPACE, EN OR JAUNE - Vers 1980

Reference N° US 20  
Serial N° 4831 51  
Year: 1980  
Material: 18k Yellow gold  
Weight: 37g  
Dimensions: 27mm  
Caliber: Quartz  
Crystal: Mineral  
Bracelet: Leather with gold deploying buckle

€ 600 - 800

Complicated lady watch by Girard Perregaux in good condition, battery needs to be replaced (the functioning of the quartz movements is not guaranteed as the conditions of sale, assistance or repair may be required).





**444.**  
BAUMER & MERCIER, EN OR JAUNE - Vers 1990

Reference N° 17337  
Serial N° 1553818  
Year: 1990  
Material: 18k Yellow gold  
Weight: 24g  
Dimensions: 30mm  
Caliber: Quartz  
Crystal: Mineral  
Bracelet: Leather with gold plated buckle

€ 300 - 600

Very good conditions, worn few times, battery needs to be replaced (the functioning of the quartz movements is not guaranteed as the conditions of sale, assistance or repair may be required).

**446.**  
VALMON GENÈVE MONTRE BRACELET, EN OR JAUNE - Vers 1960

Year: 1960  
Material: 18k Yellow gold  
Weight: 12.5g  
Dimensions: 10 x 30mm  
Caliber: Manual  
Crystal: Mineral  
Bracelet: 18k Yellow gold adaptable

€ 600 - 800

Nice and unusual Valmon Genève from 60s, actually working.



**445.**  
LONGINES LADY, EN OR BLANC ET DIAMANTS - Vers 1960

Serial N° 40761 47  
Year: 1960  
Material: 18k white gold  
Weight: 14g  
Dimensions: 14mm x 25mm  
Caliber: Manual, cal410  
Crystal: Plexiglas  
Bracelet: leather with metal buckle

€ 800 - 1.200

Elegant and in good conditions lady Longines, actually working.



**447.**  
PIAGET MONTRE BRACELET, EN OR PLAQUÉ - Vers 1960

Year: 1960  
Material: Gold plated 20 micron  
Dimensions: 16mm  
Caliber: Manual  
Crystal: Plexiglas  
Bracelet: Gold plated with red stones

€ 600 - 800

In good conditions, dial with patina and actually working, service may be expected.





**448.**

AUDEMARS PIGUET LADY, EN OR BLANC ET DIAMANTS - Vers 1983

Serial N° B27\*\*8

Year: 1983

Material: 18k White gold

Weight: 60g

Dimensions: 25mm

Caliber: Manual

Crystal: Sapphire

Bracelet: Integrated 18k white gold signed Audemars Piguet

Accessories: Original box, warranty and tag from the boutique.

€ 7.000 - 9.000

Splendid Audemars Piguet white gold lady's watch, with opaque dial and original diamonds indexes in 0,18ct IF, complete with its set with box, guarantee and shop tag; currently working.



DEUXIÈME SESSION  
JEUDI 20 JUILLET 2023, 15H00  
LOTTI 449 - 555

SECOND SESSION  
THURSDAY 20 JULY 2023 AT 3.00PM  
LOTS 449 - 555

lot 483





**449.**  
ROLEX PRECISION, RÉF. 6694, EN ACIER - Vers 1967

Reference N° 6694  
Serial N° 1700443  
Year: 1967  
Material: Stainless steel  
Dimensions: 34mm  
Caliber: Manual  
Crystal: Plexiglas  
Bracelet: Stainless steel

€ 1.600 - 2.000

In good conditions and actually working, service may be expected.

**451.**  
ROLEX PRECISION, RÉF. 6094, EN ACIER - Vers 1962

Reference N° 6094  
Serial N° 822933  
Year: 1962  
Material: Stainless steel  
Dimensions: 34mm  
Caliber: Manual  
Crystal: Plexiglas  
Bracelet: Stainless steel

€ 1.600 - 2.000

In good conditions and actually working, service may be expected.



**450.**  
ROLEX OYSTER SPEEDKING PRECISION, RÉF. 6434, EN ACIER - Vers 1969

Reference N° 6434  
Serial N° 2215885  
Year: 1969  
Material: Stainless steel  
Dimensions: 33mm  
Caliber: Manual  
Crystal: Plexiglas  
Bracelet: Stainless steel

€ 1.400 - 1.600

In good conditions and actually working, service may be expected.

**452.**  
ROLEX PRECISION, RÉF. 6627, EN ACIER - Vers 1961

Reference N° 6427  
Serial N° 692557  
Year: 1961  
Material: Stainless steel  
Dimensions: 34mm  
Caliber: Manual  
Crystal: Plexiglas  
Bracelet: Stainless steel

€ 1.800 - 2.200

In good conditions and actually working, service may be expected.







**453.**

ROLEX DAY-DATE, RÉF. 18038, EN OR JAUNE - Vers 1986

Reference N° 18038  
Serial N° 930\*\*59  
Year: 1986  
Material: 18k Yellow gold  
Weight: 128g  
Dimensions: 36mm  
Caliber: Automatic, cal. 1556  
Crystal: Sapphire  
Bracelet: 18k Yellow gold Rolex "President"

€ 8.000 - 10.000

The Day-Date is probably one of the most iconic watches that can come to mind when you think of Rolex, introduced in 1956 as the first waterproof, chronometer-certified automatic wristwatch to display the date at 3 o'clock and the day of the week at solid letters at 12 o'clock. Considered an everyday dress watch and worn by the most influential men and women of the century, this model was available only in precious metals, including yellow, rose and white gold, as well as platinum. The Day-Date is often referred to as the President Rolex, referring to its luxurious heavy bracelet. This model is in good and working condition, with a small chip on the sapphire crystal at 10 o'clock, it is a beautiful example of a Day-Date President.





**454.**  
CUERVO Y SOBRINOS HABANA UNICOS IMPORTADORES, EN ACIER - Vers 2010

Serial N° 350868  
Year: 2010 circa  
Material: Stainless steel  
Dimensions: 39mm  
Caliber: Manual  
Crystal: Mineral  
Bracelet: Leather with stainless steel buckle

€ 700 - 900

Very charming Cuervo y Sobrinos Habana, founded in 1882, in Cuba, which still sells watches all over the world today, vintage style wristwatch in good conditions, and actually working.



**455.**  
IWC PORTOFINO, EN OR ET ACIER - Vers 1990

Serial N° 2421631  
Year: 1990  
Material: Stainless steel and gold  
Dimensions: 35mm  
Caliber: Quartz  
Crystal: Mineral  
Bracelet: Leather with original IWC buckle

€ 1.200 - 1.600

Classic Portofino by IWC, actually working and recently serviced in 2023.





**456.**  
IWC PORTUGUESE, 264/500, EN PLATINE - Vers 2004

Reference N° IW500104  
Serial N° 3056961- 264/500  
Year: 2004  
Material: Platinum  
Weight: 154g  
Dimensions: 42mm  
Caliber: Automatic, 7 days power reserve  
Crystal: Sapphire  
Bracelet: Leather with IWC deploying platinum buckle

€ 8.000 - 10.000

Beautiful and elegant limited platinum version of IWC's iconic Portuguese, in excellent condition and currently in working order;



**457.**  
FRANK MULLER CASABLANCA PERPETUAL, 90/100 EN ACIER - Vers 2010

Reference N° 7851 QPE  
Serial N° 90/100  
Year: 2010  
Material: Stainless steel  
Dimensions: 35 x 50mm  
Caliber: Automatic  
Crystal: Sapphire  
Bracelet: Stainless steel  
Accessories: Leather box and guarantee

€ 9.000 - 15.000

Complicated limited edition of 100 pieces Casablanca from Frank Muller in working conditions, complete of full set.





**458.**  
JAEGER-LECOULTRE MASTER CONTROL, EN ACIER - Vers 2000

Reference N° 141.8.97/1  
Serial N° 3457  
Year: 2000  
Material: Stainless steel  
Dimensions: 38mm  
Caliber: Automatic  
Crystal: Mineral  
Bracelet: Leather with JLC deploying buckle

€ 2.000 - 3.000

Modern tribute of the Memovox vintage Jaeger-LeCoultre iconic watches, actually working.



**459.**  
BREITLING "P.A.N. FRECCIE TRICOLORE", EN ACIER - Vers 1987

Reference N° 81950  
Serial N° 10033  
Year: 1987  
Material: Stainless steel  
Dimensions: 40mm  
Caliber: Automatic  
Crystal: Sapphire  
Bracelet: Stainless steel

€ 2.000 - 3.000

This Breitling model is dedicated to P.A.N. Freccie Tricolore (Pattuglia Acrobatica Nazionale) of the Italian Air Force, born in 1961 following the decision of the Air Force itself to create a permanent group for the collective aerobatic training of its pilots. With ten aircraft (since 1982 they have used the Aermacchi MB.339 A/PAN MLU aircraft), nine of which in formation and one solo, they are the largest aerobatic team in the world, and their flight programme, including around twenty lasting about half an hour, made them famous and recognized as one of the best aerobatic air patrols internationally, performing stunts all year round. Watch in good conditions, movement need to be serviced, actually not working.





**460.**  
EBERHARD & CO. 8 JOURS, EN ACIER - Vers 2000

Reference N° 6698  
Serial N° 201017  
Year: 2000  
Material: Stainless steel  
Dimensions: 39mm  
Caliber: Manual  
Crystal: Sapphire  
Bracelet: Leather with stainless steel buckle

€ 600 - 800

Classic 8 days power reserve from Eberhard & Co, actually working.



**462.**  
GIRARD PERREGAUX VINTAGE 1960, EN ACIER - Vers 2019

Reference N° 2598  
Serial N° 23/30  
Year: 2019  
Material: Stainless steel  
Dimensions: 38mm  
Caliber: Automatic  
Crystal: Sapphire  
Bracelet: Leather with stainless steel buckle

€ 2.000 - 3.000

Classic tribute to Vintage men chronograph actually working.



**461.**  
FREDERIC CONSTANT MOONPHASE CALENDAR, EN ACIER - Vers 2017

Reference N° FC-360 X4P 5/6  
Serial N° 1301656  
Year: 2017  
Material: Stainless steel  
Dimensions: 38mm  
Caliber: Automatic  
Crystal: Sapphire  
Bracelet: Leather with stainless steel buckle

€ 600 - 800

Classic calendar and moon phase automatic wristwatch actually working





463.

PATEK PHILIPPE CALENDAR MOON PHASE, RÉF. 5055G, EN OR BLANC - Vers 1999

Reference N° 5055G-001  
Serial N° 311\*\*20 / 405\*\*78  
Year: 1999  
Material: 18k White gold  
Weight: 80g  
Dimensions: 36mm  
Caliber: Automatic micro-rotor 240 PS  
Crystal: Sapphire  
Bracelet: Leather with deploying white gold Patek Philippe buckle  
Accessories: Original box, guarantee and solid screw back rechange.

€ 15.000 - 18.000

Very elegant and classic calendar with power reserve and moon phase in white gold with full set of box and warranty, actually working.





**464.**  
GLASHÜTTE ORIGINAL PANORAMADATUM GANGRESERVE, EN ACIER - Vers 2020

Reference N° 124017  
Serial N° 32527  
Year: 2020  
Material: Stainless steel  
Dimensions: 40mm  
Caliber: Manual  
Crystal: Sapphire  
Bracelet: Leather with deploying buckle  
Accessories: Original box and guarantee

€ 5.000 - 7.000

Watch in like new conditions, actually working, complete of full set of box and guarantee.





**465.**

F.P. JOURNE OCTA AUTO LUNE "HAVANA", EN PLATINE - Vers 2016

Reference N° Havana - AL

Serial N° 4\*\*

Year: 2016 circa

Material: Platinum

Weight: 100g circa

Dimensions: 40mm

Caliber: Automatic, cal. 1300.3

Crystal: Sapphire

Bracelet: Leather with original platinum buckle

Accessories: Original box and warranty

€ 80.000 - 110.000

Produced between 2016 and 2018 this rare variant of Octa Automatic Lune called Havana fit a warm-colored dial that perfectly match with the 40mm platinum case, this color is unique to F.P. Journe and the project developed by the Journe's own dial makers, Les Cadraniers de Genève, in a process lasting several months. This model is in very good conditions and full of box and guarantee as delivered by the boutique.







**466.**  
AUDEMARS PIGUET JULES AUDEMARS, EN OR JAUNE - Vers 2018

Serial N° I 34072  
Year: 2018  
Material: 18k Pink Gold  
Weight: 76.5g  
Dimensions: 40mm  
Caliber: Automatic, cal. 3120 N. 893352  
Crystal: Sapphire  
Bracelet: Leather with AP pink gold buckle  
Accessories: Original wood box and guarantee

€ 6.000 - 8.000

Very fine and classic Jules Audemars with guilloché dial and leather original bracelet, in very good overall conditions and actually working.



**467.**  
PANERAI LUMINOR MARINA, EN OR ROSE - Vers 2023

Reference N° PAM01112  
Serial N° OP73\*\*BB  
Year: 2023  
Material: 18k pink gold  
Weight: 142g  
Dimensions: 43mm  
Caliber: Automatic  
Crystal: Sapphire  
Bracelet: leather 18k pink gold buckle  
Accessories: box, warranty and additional bracelet

€ 10.000 - 15.000

Panerai is known in the world of watches for its large military watches in steel; the contrast of rose gold in this model with a dark dial reminiscent of the deep sea makes it a fascinating model. Complete with everything and boutique fresh.





**468.**

PANERAI LUMINOR GMT, RÉF OP6633, ACIER - Vers 1999

Reference N° OP6633

Serial N° BB11\*\*\*157

Year: 1999

Material: Stainless Steel

Dimensions: 44mm

Caliber: Automatic

Crystal: Sapphire

Bracelet: Leather and rubber with original Panerai buckle

Accessories: Box, guarantee and accessories, double strap.

€ 3.500 - 4.500

Actually working and in good condition with the full set of accessories box and guarantee.



**469.**

PANERAI LUMINOR GMT OCEAN CHRONOMETER, EN ACIER - Vers 2000

Reference N° PAM 00063

Year: 2000

Material: Stainless steel

Dimensions: 44mm

Caliber: Automatic

Crystal: Sapphire

Bracelet: Leather with original stainless steel buckle

Accessories: Box, guarantee and additional leather strap

€ 2.800 - 3.200

In good condition, full of box warranty and additional strap, actually working.





**470.**

PATEK PHILIPPE NAUTILUS, RÉF. 5980-01, EN ACIER - Vers 2007

Reference N° 5980-01  
Serial N° 43\*\*\*23  
Year: 2007  
Material: Stainless steel  
Dimensions: 43,5mm  
Caliber: Automatic, cal. 28-520  
Crystal: Sapphire  
Bracelet: Stainless Steel  
Accessories: Archive extract from Patek Philippe

€ 70.000 - 90.000

Making its major debut in 2006, the Patek Philippe Nautilus ref. 5980 equipped with a flyback chronograph function with date display, the ref. 5980 features Patek Philippe's first self-winding in-house chronograph cal. CH 28-520 and was also the first Nautilus chronograph model launched. While its dial retains key elements of a Nautilus, including a fluted dial made available in blue or black for the stainless steel examples that were discontinued in 2014 and have been one of the most sought-after Patek Philippe references ever since.





**471.**  
PIAGET VINTAGE, RÉF. 13406, EN OR GRIS - Vers 1970

Reference N° 13406  
Serial N° 123169  
Year: 1970  
Material: 18k white gold  
Weight: 38g  
Dimensions: 33mm  
Caliber: Automatic  
Crystal: Mineral  
Bracelet: Leather with 18k white gold buckle

€ 1.200 - 1.400

Classic and fine Piaget men wristwatch from 70s, actually working.



**472.**  
VACHERON CONSTANTIN PATRIMONY, RÉF. 81180, EN OR GRIS - Vers 2010

Reference N° 81180  
Serial N° 11266565  
Year: 2010  
Material: 18k White gold  
Weight: 58g  
Dimensions: 40mm  
Caliber: Manual  
Crystal: Sapphire  
Bracelet: Leather with Vacheron Constantin white gold buckle

€ 6.500 - 8.500

In white gold and ultra-thin, this Patrimony by Vacheron Constantin is truly a simple and elegant watch; in very good and working condition.





**473.**  
ROLEX AIR KING, RÉF. 5500, EN ACIER - Vers 1965

Reference N° 5500  
Serial N° 1195318  
Year: 1965  
Material: Stainless steel  
Dimensions: 34mm  
Caliber: Automatic, cal. 1530  
Crystal: Plexiglas  
Bracelet: Stainless steel

€ 1.800 - 2.200

In good conditions and actually working, service may be expected.



**475.**  
ROLEX AIR KING, RÉF. 5500, EN ACIER - Vers 1960

Reference N° 5500  
Serial N° 571853  
Year: 1960  
Material: Stainless steel  
Dimensions: 34mm  
Caliber: Automatic, cal. 1530  
Crystal: Plexiglas  
Bracelet: Stainless steel

€ 1.600 - 2.000

In good conditions and actually working, service may be expected.



**474.**  
ROLEX AIR KING, RÉF. 1002, EN ACIER - Vers 1965

Reference N° 1002  
Serial N° 1247132  
Year: 1965  
Material: Stainless steel  
Dimensions: 33mm  
Caliber: Automatic, cal. 1520  
Crystal: Plexiglas  
Bracelet: Stainless steel

€ 1.800 - 2.200

In good conditions and actually working, service may be expected.



**476.**  
ROLEX AIR KING DATE, RÉF. 5700, EN ACIER - Vers 1959

Reference N° 5700  
Serial N° 515415  
Year: 1959  
Material: Stainless steel  
Dimensions: 34mm  
Caliber: Automatic  
Crystal: Plexiglas  
Bracelet: Stainless steel

In good conditions and actually working, service may be expected, Engraved on the back: "Michael from your ever loving wife Eileen` 27/ 08/ 61"

€ 2.200 - 2.600



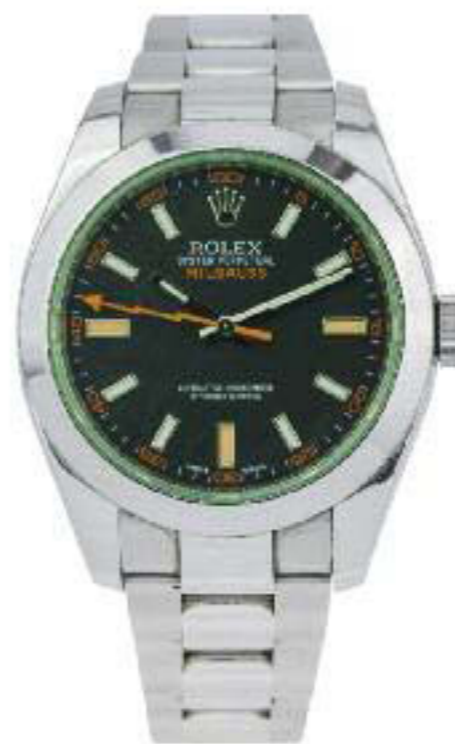
**477.**

ROLEX OYSTERQUARTZ DATEJUST, EN ACIER - Vers 1979

Reference N° 1700/0  
 Serial N° 5573879  
 Year: 1979  
 Material: Stainless steel  
 Dimensions: 36mm  
 Caliber: Quartz  
 Crystal: Sapphire  
 Bracelet: Stainless steel  
 Accessories: Original box and warranty

€ 3.500 - 4.000

The Rolex Oysterquartz Datejust ref. 1700/0, which first appeared in 1977, was introduced during the time the brand was trying to meet customer demands for quartz watch movements and can be considered the granddaddy of all subsequent quartz watches created by the brand. This model is in good condition and complete of the full set, the dial have a damage and battery needs to be replaced (the functioning of the quartz movements is not guaranteed as the conditions of sale, assistance or repair may be required).



**478.**

ROLEX MILGAUSS, RÉF. 116400GV, EN ACIER - Vers 2013

Reference N° 116400GV  
 Serial N° U120\*\*V6  
 Year: 2013  
 Material: Stainless steel  
 Dimensions: 40 mm  
 Caliber: Automatic  
 Crystal: Sapphire  
 Bracelet: Stainless steel  
 Accessories: Box and guarantee

€ 6.000 - 8.000

Rolex introduces the Milgauss in 1956 via the ref. 6541, designed as an anti-magnetic wristwatch for professionals working in power plants, medical facilities and laboratories, the watch was able to withstand magnetic fields up to 1,000 gauss. In 2007, Rolex released the Milgauss ref. 116400 to replace its previous ref. 1019. Maintaining the characteristics of the latest Milgauss references, the movement is protected by a metal cage to resist magnetic fields. Aesthetically it pays the right tribute to the ref. 6541, and features an orange "lightning bolt" central seconds hand. Furthermore, what is particularly interesting is that the ref. 116400 features a green colored sapphire crystal which gives the reference a completely unique charm. To this day, it is the only Rolex model ever produced with a colored sapphire crystal.





**479.**

OMEGA SPEEDMASTER MOONWATCH, RÉF. ST 105.12, EN ACIER - Vers 1965

Reference N° S 105 012-65

Serial N° 22829289

Year: 1965

Material: Stainless steel

Dimensions: 42mm

Caliber: Manual, cal. 321

Crystal: Plexiglas

Bracelet: Stainless steel original Omega

€ 10.000 - 15.000

One of the most iconic watches we see these days is certainly the Omega Speedmaster Moonwatch, so it is right to pay homage to the first original versions from the 60s of this splendid model that is still a sales record today without substantial changes in the design. This splendid S 105 012 is a splendid example in excellent condition, "Professional" dial and T Swiss Made T, the famous caliber 321 could not be missing to complete this timeless vintage chronograph.





**480.**

VACHERON CONSTANTIN HISTORIQUE, EN OR JAUNE - Vers 1990

Reference N° 47001  
Serial N° 591923  
Year: 1990  
Material: 18k Yellow gold  
Weight: 70g  
Dimensions: 37mm  
Caliber: Automatic  
Crystal: Mineral  
Bracelet: Leather with Vacheron Constantin gold buckle  
Accessories: Box and guarantee

€ 4.000 - 6.000

Beautiful case and very spherical shapes, this vintage-style model is in good condition, complete with its accessories and currently in working order.







**481.**

PATEK PHILIPPE CHRONOGRAPHE "SPIDER LUGS" - "ANSE A RAGNO", RÉF. 1579,  
EN OR JAUNE - Vers 1955

Reference N° 1579  
Serial N° 68\*\*27  
Year: 1955  
Material: 18k Yellow gold  
Weight: 38g.  
Dimensions: 36mm  
Caliber: Manual  
Crystal: Plexiglas  
Bracelet: Leather with original gold Patek Philippe Buckle  
Accessories: Extract from the Archives  
€ 70.000 - 90.000

Anse a Ragno or Spider Lugs is the nickname of this splendid and rare chronograph, lugs that give the watch an incredibly unusual and wonderful shape, the model stands out for this peculiarity from the normal Patek Philippe chronographs inspired by Calatrava of the time. The model we are presenting displays a dial in excellent condition, which together with the solid case with accentuated edges makes this model a true rarity to collect.





**482.**

ZENITH COMPAX "ZENITONE", REF. 12526, EN OR JAUNE - Vers 1940

Reference N° 12526  
Serial N° 804296  
Year: 1940  
Material: 18k Yellow gold  
Weight: 75g  
Dimensions: 46mm  
Caliber: Manual, cal. 166  
Crystal: Plexiglas  
Bracelet: Leather with gold plated buckle

€ 20.000 - 30.000

Until the 70s we used to define oversized watches with a diameter of 36 / 37mm, but with this Zenith Compax, in the 40s, we are faced with an extreme example of an oversized watch out of every scheme considering its diameter of even 46mm! A massive 18k gold case enclosing a stunning dial in incredible and totally original condition. This Zenith is unique and truly a collector's piece.





**483.**

JAEGERL-LECOULTRE REVERSO SEPTANTIEME 8 JOURS, EN OR JAUNE - Vers 2003

Reference N° 240.219  
Serial N° 3002420  
Year: 2003  
Material: 18k yellow gold  
Weight: 137g  
Dimensions: 30 x 47mm  
Caliber: Manual, cal.879  
Crystal: Sapphire  
Bracelet: leather with JLC gold deploying buckle  
Accessories: Box, guarantee and loupe

€ 18.000 - 22.000

Splendid and complicated version of the iconic Reverso by Jaeger-LeCoultre, complete of full set and actually working.





**484.**  
ZENITH PORT ROYAL ELITE, RÉF 02.0250.684, EN ACIER - Vers 2000

Reference N° 02.0250.684  
Serial N° 82\*\*89  
Year: 2000  
Material: Stainless Steel  
Dimensions: 31 x 43mm  
Caliber: Zenith Automatic Cal. 47515  
Crystal: Sapphire  
Bracelet: Stainless steel original  
Accessories: Original Tag

€ 1.200 - 1.600

Watch in like new condition, never worn, dial with a Dial with a central brown spot given by the time.

**486.**  
ZENITH EL PRIMERO, RÉF 20.0250.0400, EN OR PLAQUÉ - Vers 1990

Reference N°20.0250.0400  
Year: 1990  
Material: Gold plated  
Dimensions: 36mm  
Caliber: Automatic El Primero  
Crystal: Sapphire  
Bracelet: Leather with plated buckle  
Accessories: Original Tag

€ 1.500 - 2.000

Watch in like new condition, never worn.



**485.**  
MOVADO BARCHETTA 1881 SUISSE, RÉF 40.A8.820, EN OR JAUNE - Vers 1993

Reference N° 40.A8.820  
Serial N° 106  
Year: 1993  
Material: 18k Yellow gold  
Weight: 40g.  
Dimensions: 23 x 45mm  
Caliber: Manual  
Crystal: Sapphire  
Bracelet: Leather with original Movado stainless steel buckle  
Accessories: Box and guarantee

€ 1.300 - 1.800

Good and actually working conditions; full set.

**487.**  
BLANCPAIN CHRONOGRAPHE, RÉF 1185, EN OR JAUNE - Vers 1991

Reference N° 1185-1418-55  
Serial N° 513  
Year: 1991  
Material: 18k Yellow gold  
Weight: 34g.  
Dimensions: 33mm  
Caliber: Automatic  
Crystal: Sapphire  
Bracelet: Leather with gold Blancpain Buckle  
Accessories: Box and guarantee

€ 2.000 - 3.000

Actually and in good condition, complete of full set box and guarantee.





**488.**  
CARTIER TANK AMERICAINE, RÉF. 1725, EN OR GRIS - Vers 2000

Reference N° 1725  
Serial N° 105547CD  
Year: 2000  
Material: 18k white gold  
Weight: 49g  
Dimensions: 23mm x 40mm  
Caliber: Automatic  
Crystal: Sapphire  
Bracelet: leather with 18k white gold deploying buckle  
Accessories: new leather bracelet and service dated 2012

€ 4.000 - 6.000

Cartier's iconic rectangular wristwatch, the Tank, was born in 1917 and is said to be inspired by the rigid lines of tanks. The Tank Américaine is an entirely more recent model. While its curvaceous case and dial stamped with elongated Roman numerals make it look like a product of the 1920s, in fact any history of the Tank Américaine wouldn't be complete without at least a passing mention of the watch that inspired it: the Tank Cintrée, a rectangular and thin watch with many characteristics in common which was introduced in 1921. The Tank Américaine instead was introduced in the late 80s and launched in the early 90s, in white or yellow gold, and some versions in Platinum. The present model in white gold, already the most sought-after variant at the time, is in working condition and with the Cartier inspection seal from 2012 and a new strap.



**489.**  
CARTIER TANK A BASCULANTE, RÉF. 2390, EN ACIER - Vers 1998

Reference N° 2390  
Serial N° 68\*\*\*2PB  
Year: 1998  
Material: Stainless Steel  
Dimensions: 25 x 38mm  
Caliber: Manual  
Crystal: Sapphire  
Bracelet: Leather with Cartier Buckle

€ 4.500 - 5.500

The Cartier "Tank Basculante" model was launched on the market in 1932. The purpose of this fascinating system allowed the complete rotation of the case to thus protect the glass and consequently the dial during sporting activities, very similar to the role of the famous Jaeger Reverso LeCoultre. It was initially known as the "Cabriolet Reversible" the current model is in good condition and currently working, with leather strap and Cartier clasp.

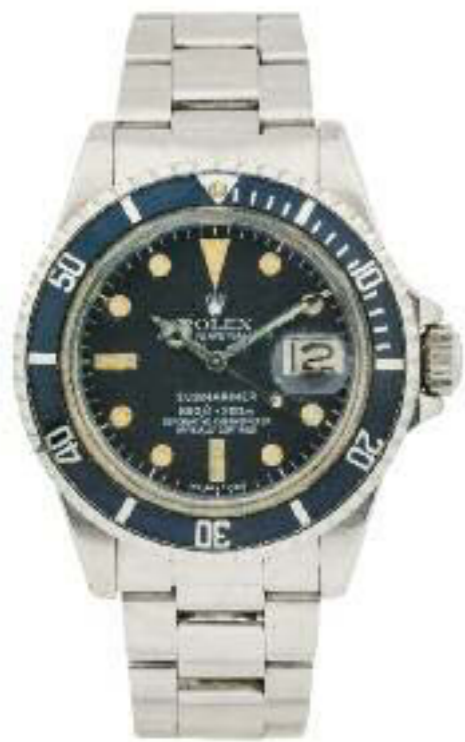
**490.**  
CARTIER TANK DIVAN, EN ACIER - Vers 2000

Reference N° 2612  
Serial N° 101279CE  
Year: 2000  
Material: Stainless Steel  
Dimensions: 38 x 30mm  
Caliber: Automatic  
Crystal: Sapphire  
Bracelet: Leather with original stainless steel buckle  
Accessories: Pochette

€ 1.200 - 1.600

Particular version of the classic Tank, this Divan version is currently working.





**491.**  
ROLEX SUBMARINER, RÉF. 1680, EN ACIER - Vers 1979

Reference N° 1680  
Serial N° 6152569  
Year: 1979  
Material: Stainless steel  
Dimensions: 40mm  
Caliber: Automatic 1570  
Crystal: Plexiglas  
Bracelet: Stainless steel  
Accessories: Expertise by Mr. Valter Barocco

€ 7.000 - 9.000

The first Rolex Submariner to present the date is precisely the reference 1680, which in 1965 was added to the other two models without date and already in production, the references 5512 and 5513 and also the 5508 which in those years was removed from production. The splendid dial has white tritium indexes and white Submariner signature. In good condition and currently working although a service is recommended to restore it to its original splendor.



**492.**  
ROLEX SUBMARINER, RÉF. 5513, EN ACIER - Vers 1978

Reference N° 5513  
Serial N° 555\*\*\*3  
Year: 1978  
Material: Stainless steel  
Dimensions: 40mm  
Caliber: Automatic, cal. 1520  
Crystal: Plexiglas  
Bracelet: Stainless steel  
Accessories: Original box

€ 8.000 - 10.000

The Rolex Submariner 5513 was released in 1962 and in production until 1989, approximately 27 years. Throughout its history, the reference has evolved through various modifications and improvements, especially regarding the dial. While early examples of the reference featured glossy gold dials with gold lettering, later examples featured matte black dials. This specimen has a very well preserved dial and a mechanical cal. 1520 currently working.





**493.**

ROLEX SEA-DWELLER, RÉF 1665, ACIER - Vers 1981

Reference N° 1665

Serial N° 66\*\*\*15

Year: 1981

Material: Stainless Steel

Dimensions: 40mm

Caliber: Automatic, cal. 1570

Crystal: Plexiglas

Bracelet: Stainless Steel Rolex

€ 13.000 - 18.000

During the 1960s, most watches lacked the ability to dive and resurface great underwater depths without breaking. In 1967 Rolex launched the Sea-Dweller model, which set a new standard in performance and technology, with an incredible depth rating of 2000 feet (610 meters) and the first helium escape valve. The helium escape valve allowed the release of helium gas, which built up from the air mixture used in the dive chambers, during decompression. In the case back early models carried the engravings "Patent Pending Rolex Oyster Gas Escape Valve" on the case back, which was later changed to "Rolex Patent Oyster Escape Valve" as seen on the current watch.

In the late 1970s, Rolex discontinued the Double Red Sea-Dweller with two lines of red text on the dial and replaced it with the "Great White" dial, which no longer used red text lines like this model.





**494.**  
ROLEX COSMOGRAPH DAYTONA "ZENITH", RÈF 16520, EN ACIER - Vers 1993

Reference N° 16520  
Serial N° S2\*\*\*82  
Year: 1993  
Material: Stainless Steel  
Dimensions: 40mm  
Caliber: Automatic, cal. 4030 Zenith  
Crystal: Sapphire  
Bracelet: Stainless Steel Rolex  
Accessories: Original Rolex Guarantee

€ 21.000 - 28.000

In 1988 Rolex launches the new Daytona. After nearly 25 years of manual winding movements it introduces the 4030 caliber derived from Zenith's famous El Primero calibre, the reference was 16520 and has enjoyed tremendous success over a decade of nothing but soaring demand and praise. Increasingly in demand, the modern and timeless design of the Cosmograph Daytona, still in production today with small modifications, has attracted the attention of collectors and has become the most iconic sports watch in its status. The current example of the ref. 16520 bears a serial S from around 1993. Preserved in original condition, it is also accompanied by its original guarantee, making it a highly collectible chronograph of the era.







**495.**

ROLEX COSMOGRAPH DAYTONA, RÉF. 6265, EN ACIER - Vers 1979

Reference N° 6265

Serial N° 60\*\*23

Year: 1979

Material: Stainless Steel

Dimensions: 37mm

Caliber: manual, cal. 727

Crystal: Plexiglas

Bracelet: Stainless steel N.78350 F. 571

Accessories: Expertise by Mr. Valter Barocco

€ 45.000 - 65.000

Launched in the late 1960s, the Rolex Cosmograph Daytona ref. 6265 was the last model to feature a manual winding caliber before Rolex introduced the Zenith automatic in 1989. The ref. 6265 featured various upgrades over its previous models such as the ref. 6239 and 6241. Fitted with a reliable Triplock 702 crown with 302 screwed buttons, the watch's water resistance capabilities are further enhanced. Finally, together with the ref. 6263 the updated caliber 727 which beats at 21,600 vph raises its level of accuracy over its older caliber 722 which beats at 18,000 vph. This example Rolex Cosmograph Daytona ref. 6265 in stainless steel featuring a beautiful and rare small Daytona dial called "Cherry Red" by some, smaller than the classic "Big Red" Daytona. Preserved in excellent condition both in terms of case and mechanics, as well as the dial, it is a splendid Rolex chronograph.







**496.**  
ROLEX LUNETTE POUR CHRONOGRAPHE ROLEX DAYTONA VINTAGE

Stainless steel chronograph bezel, calibrated from 200 km/h, for Rolex Daytona ref 6265 and 6239, 6262.

€ 2.400 - 2.600

In good conditions original spare part from 70s / 80s.

**498.**  
ROLEX OYSTR PERPETUAL, RÉF. 6285, EN ACIER - Vers 1957

Reference N° 6285  
Serial N° 239441  
Year: 1957  
Material: Stainless steel  
Dimensions: 33mm  
Caliber: Automatic  
Crystal: Plexiglas  
Bracelet: Stainless steel

€ 2.000 - 3.000

In good conditions, dial with patina and actually working, service may be expected.



**497.**  
ROLEX DATE, RÉF. 1500, EN ACIER - Vers 1959

Reference N° 1500  
Serial N° 511575  
Year: 1959  
Material: Stainless steel  
Dimensions: 34mm  
Caliber: Automatic, cal. 1560  
Crystal: Plexiglas  
Bracelet: Stainless steel

€ 1.800 - 2.200

In good conditions and actually working, service may be expected.

**499.**  
ROLEX EXPLORER, RÉF 5504, EN ACIER - Vers 1963

Reference N° 5504  
Serial N° 95\*\*70  
Year: 1963  
Material: Stainless Steel  
Dimensions: 35mm  
Caliber: Automatic, cal. 1530  
Crystal: Plexiglas  
Bracelet: Rolex Stainless Steel

€ 8.000 - 10.000

Watch in currently working condition, dial probably restored, original riveted Rolex bracelet.





**500.**

ROLEX SUBMARINER "THE KERMIT 50th ANNIVERSARY", RÉF 16610LV, EN ACIER  
- Vers 2008

Reference N° 16610LV  
Serial N° M73\*\*72  
Year: 2008  
Material: Stainless Steel  
Dimensions: 40mm  
Caliber: Automatic, cal. 3135  
Crystal: Sapphire  
Bracelet: Stainless Steel Rolex  
Accessories: Original Box, Guarantee and  
€ 12.000 - 16.000

In 2003 in commemoration of the 50th anniversary of the Rolex Submariner, Rolex presented the ref. 16610LV, thanks to its green bezel, an instant hit! A cult favorite among collectors, his nickname was coined after 'Kermit' the Frog, as the color of his bezel is reminiscent of the protagonist in productions of the Muppets. Only in production for 7 years, the reference was replaced in 2010 by the ref. 116610LV, the 'Hulk' which has been updated with a green bezel and matching green dial.

This watch is offered in very good condition and with an incredible set of all accessories box and guarantee.





**501.**  
ROLEX SUBMARINER, RÉF 16610, EN ACIER - Vers 1997

Reference N° 16610  
Serial N° U63\*\*95  
Year: 1997  
Material: Stainless Steel  
Dimensions: 40mm  
Caliber: Automatic, cal.  
Crystal: Sapphire  
Bracelet: Stainless Steel Rolex  
Accessories: Original Box and Tag.

€ 7.000 - 9.000

Watch in good condition complete with its box and tag, without guarantee, currently in working order.



**503.**  
ROLEX GMT MASTER 'PEPSI', RÉF 16710, EN ACIER - Vers 2005

Reference N° 16710  
Serial N° D500\*\*61  
Year: 2005  
Material: Stainless Steel  
Dimensions: 40mm  
Caliber: Automatic, cal. 3185  
Crystal: Sapphire  
Bracelet: Stainless steel

€ 7.000 - 11.000

Very good condition, actually working and recently (03-2023) totally serviced.



**502.**  
ROLEX GMT MASTER II 'COKE', RÉF 16710, ACIER - Vers 1989

Reference N° 16710  
Serial N° L5\*\*\*28  
Year: 1989  
Material: Stainless Steel  
Dimensions: 40mm  
Caliber: Automatic Cal. 3185  
Crystal: Sapphire  
Bracelet: Stainless Steel

€ 7.000 - 9.000

Watch in very good conditions, currently working.





**504.**  
ZENITH CHRONOMETER, EN ACIER - Vers 1980

Reference N° 19.0060.337  
Serial N° 4190063337  
Year: 1980  
Material: Stainless steel  
Dimensions: 38mm  
Caliber: Quartz  
Crystal: Mineral  
Bracelet: Leather with stainless steel buckle  
Accessories: original tag

O.I.

Watch in like new conditions, comes from an old stock, actually not working battery needs to be replaced (the functioning of the quartz movements is not guaranteed as the conditions of sale, assistance or repair may be required).

**506.**  
ZENITH AUTOMATIC, EN OR PLAQUÉ - Vers 1980

Reference N° 27.0100.467  
Serial N° 4270103467  
Year: 1980  
Material: gold plated  
Dimensions: 37mm  
Caliber: Automatic  
Crystal: Plexiglas  
Bracelet: Leather with plated buckle  
Accessories: Original tag

O.I.

Actually working, watch in like new conditions, comes from an old stock.



**505.**  
ZENITH EPERVIER, EN ACIER - Vers 1980

Reference N° 38.0130.393  
Serial N° 4380133393  
Year: 1980  
Material: Stainless steel with 14k bezel  
Dimensions: 34mm  
Caliber: Quartz  
Crystal: Mineral  
Bracelet: Leather with metal buckle  
Accessories: Original tag

O.I.

Watch in like new conditions, comes from an old stock, actually not working battery needs to be replaced (the functioning of the quartz movements is not guaranteed as the conditions of sale, assistance or repair may be required).

**507.**  
ZENITH AUTOMATIC, EN OR PLAQUÉ - Vers 1980

Reference N° 27-0410.467  
Serial N° 4270414467  
Year: 1980  
Material: Gold plated  
Dimensions: 35mm  
Caliber: Automatic  
Crystal: Plexiglas  
Bracelet: Leather with original plated buckle  
Accessories: Original tag

O.I.

Actually working, watch in like new conditions, comes from an old stock.





**508.**

ROLEX DATE, RÉF. 1500, EN OR JAUNE - Vers 1970

Reference N° 1500  
Year: ca. 1970  
Material: 18k yellow gold  
Weight: 47g  
Dimensions: 34mm  
Caliber: Automatic, cal. 1570  
Crystal: Plexiglas  
Bracelet: leather with stainless steel buckle

€ 2.800 - 3.500

Nice Date by Rolex 34mm in yellow gold, actually working, Serial numbers difficult to read due to wear caused by contact with the strap.

**510.**

ROLEX OYSTR PERPETUAL CHRONOMETER, RÉF. 3131, EN OR JAUNE - Vers 1955

Reference N° 3131  
Serial N° 92088  
Year: 1955  
Material: Yellow gold  
Weight: 35g  
Dimensions: 32mm  
Caliber: Automatic  
Crystal: Plexiglas  
Bracelet: Leather with metal buckle

€ 2.800 - 3.200

In good conditions and actually working, service may be expected.



**509.**

ROLEX OYSTR PERPETUAL CHRONOMETER, RÉF. 3131, EN OR ROSE - Vers 1959

Reference N° 3130  
Serial N° 521213  
Year: 1959  
Material: 18k pink gold  
Weight: 35g  
Dimensions: 32mm  
Caliber: Automatic  
Crystal: Plexiglas  
Bracelet: Leather with metal buckle

€ 3.000 - 4.000

In good conditions and actually working, service may be expected.

**511.**

ROLEX OYSTR PERPETUAL, RÉF. 3131, EN OR JAUNE - Vers 1954

Reference N° 3131  
Year: 1954  
Material: Yellow gold  
Weight: 41g  
Dimensions: 32mm  
Caliber: Automatic  
Crystal: Plexiglas  
Bracelet: Leather with metal buckle

€ 2.800 - 3.200

In good conditions and actually working, service may be expected.





**512.**  
PATEK PHILIPPE ELLIPSE, RÉF. 3978, EN OR JAUNE - Vers 1994

Reference N° 3978 / 017  
Serial N° 1'8\*2'670  
Year: 1994  
Material: 18k Yellow gold  
Weight: 98g  
Dimensions: 28 x 33mm x 18,3cm  
Caliber: Manual, cal. 215  
Crystal: Sapphire  
Bracelet: Integrated in yellow gold 18,5 cm  
Accessories: Original papers and guarantee

€ 9.500 - 11.500

In 1968 Patek Philippe presents the Ellipse, a very minimalist watch that was both extremely elegant and ahead of its time. Its vibrant blue sunburst dial was bold and gave this modern creation great character and depth. The Ellipse is a model characterized by its visually attractive balance. The rounded rectangular shape case was designed using the famous "golden ratio". Used by artists around the world since the Renaissance, this mathematical ratio is found in the most beautiful architectural monuments and used for the most famous paintings in the world.



**513.**  
ROLEX DATE, RÉF. 1503, EN OR JAUNE - Vers 1988

Reference N° 1503  
Serial N° R6\*\*\*28  
Year: 1988  
Material: 18k yellow gold  
Weight: 102g.  
Dimensions: 34mm  
Caliber: Automatic  
Crystal: Plexiglas  
Bracelet: Original 18k yellow gold riveted  
Accessories: Original Box and dated guarantee

€ 6.000 - 8.000

In very good conditions, actually working, and complete of original box a guarantee dated 23/06/1988 from Matranga Palermo (Italy) Rolex boutique.







**514.**

ROLEX GMT MASTER II "NIPPLE DIAL", RÉF. 16718, EN OR JAUNE - Vers 1998

Reference N° 16718  
Serial N° R98\*\*\*7  
Year: 1998  
Material: 18k Yellow gold  
Weight: 140g  
Dimensions: 40mm  
Caliber: Automatic, cal. 3185  
Crystal: Sapphire  
Bracelet: 18k yellow gold signed Rolex  
Accessories: Original box

€ 28.000 - 32.000

Introduced in the late 80s, the 18K yellow gold reference 16718 is the gold version of the GMT Master II, powered by the caliber 3185, the first in-house Rolex movement to feature an independently adjustable 24-hour hand which allows the wearer to conveniently set an additional time. This model is appreciated for having a splendid bronze-brown dial and bezel perfectly integrated with the yellow gold of the case. The watch is kept in excellent condition and is currently in working order.





**515.**

VACHERON CONSTANTIN "CORNE DE VACHE", EN OR JAUNE - Vers 1950

Serial N° 311\*\*4  
Year: 1950  
Material: 18k Yellow gold  
Weight: 74g  
Dimensions: 33mm  
Caliber: P453/3C  
Crystal: Plexiglas  
Bracelet: 18k yellow gold not signed

€ 2.200 - 4.200

This splendid watch best expresses the concept of elegance of watches in the 50s. Vacheron Constantin was an absolute must for watches with particular lugs like these nicknamed "Corne de Vache" or cow horns, which in contrast to the linearity and simplicity of the dial and case together form a splendid object. Powered by a superb hand-wound caliber P453 movement beautifully finished, currently in working order and with an unsigned yellow gold bracelet, this watch is definitely a collection piece.





**516.**  
UNIVERSAL GENÈVE "TSAR", EN OR JAUNE - Vers 1955

Reference N° 112247  
Serial N° 140\*\*93  
Year: 1955 circa  
Material: 18k yellow gold  
Weight: 35g  
Dimensions: 35mm  
Caliber: Universal cal.128  
Crystal: Plexiglas  
Bracelet: Leather with metal buckle  
Accessories: Expertise by Mr. Valter Barocco

€ 10.000 - 15.000

In the early 1950s, Universal Genève was known for its high-quality work and important watches with enamel dials are appreciated by collectors and enthusiasts all over the world.

This timepiece certainly represents an object of enormous charm and its important subject, probably the Tsar of Russia, Tsar Alexander III or Nicholas II, on the saddle of a magnificent white horse with gold decorations. Not much is known about the production of this watch but it is probably a one-of-a-kind piece or a very small series. What is known however is the quality of the timepiece, its magnificent case typical of Universal Genève for the enameled dials, signed on the back and with the manual winding movement also signed by Universal Genève. Currently in working order, it is a rare opportunity to own a magnificent watch that best represents the tastes and sensibilities of the 1950s.





**517.**

PATEK PHILIPPE CALATRAVA, REF. 2526, OR JAUNE - Vers 1953

Reference N° 2526  
Serial N° 26\*\*\*63  
Year: 1953  
Material: 18k yellow gold  
Weight: 35g.  
Dimensions: 35.5mm  
Caliber: Automatic, cal. 12-600  
Crystal: Plexiglas  
Bracelet: Leather with original gold Patek Philippe Buckle  
Accessories: Original leather box

€ 25.000 - 35.000

Patek Philippe's first automatic wristwatch, the legendary reference 2526, was introduced to the market in 1953 and was launched with the famous caliber 12-600 AT, Patek Philippe's first automatic movement, considered by many to be the most beautiful self-winding movement ever made.

This model is exceptionally well preserved and from the original family. The off-white enamel dial of the first series is in truly remarkable condition and features the classic antique brownish graphics. In original condition, unrestored, the enamel dial impeccably preserved and appearing not to have suffered from time, it is an excellent example of a reference 2526 first series with many of the qualities that attract connoisseurs today.





**518.**  
GOBBI MILANO, EN OR JAUNE - Vers 1960

Reference N° 295  
Serial N° 1120029  
Year: 1960  
Material: Stainless steel and gold  
Weight: 42g  
Dimensions: 33mm  
Caliber: Manual Ebel  
Crystal: Plexiglas  
Bracelet: Integrated 18k yellow gold

€ 700 - 900

A very interesting wristwatch from Gobbi Milano, a well-known Patek Philippe dealer with personalized dials from their boutique, a splendid bracelet with a vintage look, actually not working service will be needed.

**520.**  
OMEGA DISCO VOLANTE, EN ACIER - Vers 1939

Serial N° 9232078  
Year: 1939  
Material: Stainless steel  
Dimensions: 39mm  
Caliber: Manual  
Crystal: Plexiglas  
Bracelet: Leather with metal buckle

€ 2.200 - 2.600

The first thing that can be noticed about this splendid Omega is the size out of standard of 39mm, in excellent condition; dial with splendid natural patina of the time, currently working.



**519.**  
OMEGA LARGE, EN OR JAUNE - Vers 1960

Serial N° 9855619  
Year: 1960  
Material: 18k Yellow gold  
Weight: 45g  
Dimensions: 37mm  
Caliber: Manual  
Crystal: Plexiglas

€ 1.100 - 1.500

Classic and unusual dimensions Omega, actually working.

**521.**  
GIRARD PERREGAUX, EN ACIER - Vers 1940

Year: 1940  
Material: Stainless steel  
Dimensions: 34mm  
Caliber: Manual  
Crystal: Plexiglas  
Bracelet: Leather with stainless steel buckle  
Accessories:

O.I.

Dial with natural patina of the time, recently serviced and currently working.





**522.**  
BREITLING "MYSTERY", EN ACIER - Vers 1960

Serial N° 73215  
Year: 1960  
Material: Stainless steel  
Dimensions: 38mm  
Caliber: Manual  
Crystal: Plexiglas  
Bracelet: Leather with stainless steel buckle

€ 1.000 - 2.000

Breitling is recognized by its professional, military and often aviation watches, in fact this example in steel and with a "mystery or galaxy" dial that recalls the famous collaboration between Jaeger-LeCoultre and Vacheron Constantin is absolutely out of the ordinary. Gorgeous patina on dial signed and currently in working order.



**523.**  
OYSTER JUNIOR SPORT, EN ACIER - Vers 1925

Year: 1925  
Material: Stainless steel  
Dimensions: 30mm  
Caliber: Manual  
Crystal: Plexiglas  
Bracelet: Leather with metal buckle

€ 1.000 - 1.500

In good conditions, dial with patina and actually working, service may be expected.



**524.**  
OYSTER RALEIGH, EN ACIER - Vers 1925

Year: 1925  
Material: Stainless steel  
Dimensions: 28mm  
Caliber: Manual  
Crystal: Plexiglas  
Bracelet: Leather with metal buckle

€ 800 - 1.500

In good conditions, dial with patina and actually working, service may be expected





**525.**

PATEK PHILIPPE NAUTILUS, RÉF. 3800, EN ACIER - Vers 1985

Reference N° 3800/001  
Serial N° 1423088  
Year: 1985  
Material: Stainless steel  
Dimensions: 37mm  
Caliber: Automatic, cal.335SC  
Crystal: Sapphire  
Bracelet: Stainless steel  
Accessories: Original box and original guarantee by Gobbi Milano

€ 30.000 - 50.000

Launched in 1981, and at 37 mm in diameter the reference 3800 was Patek Philippe's smallest iteration of the original Nautilus reference 3700. This model, actually working, comes with box and original guarantee dated 1985 by Gobbi Milano.



**526.**

PATEK PHILIPPE NAUTILUS RÉF. 3800/1, EN ACIER, vers 1985

Reference N° 3800/1  
Serial N° 142\*\*08  
Year: 1985  
Material: Stainless steel  
Dimensions: 37mm  
Caliber: Automatic, cal.335SC  
Crystal: Sapphire  
Bracelet: Stainless steel  
Accessories: Box and extract from the archives

€ 30.000 - 40.000

Launched in 1981, and at 37mm in diameter the reference 3800 was Patek Philippe's smallest iteration of the original Nautilus reference 3700. This model, actually working, comes with box and extract from the archives.





527.

PATEK PHILIPPE NAUTILUS RÉF. 3700/1, EN ACIER, vers 1977

Reference N° 3700  
Serial N° 1'3'3'5\*0  
Year: 1977  
Material: Stainless steel  
Dimensions: 42mm  
Caliber: Automatic, cal. 28-255 C  
Crystal: Sapphire  
Bracelet: Stainless steel  
Accessories: Extrait from the Archives

€ 40.000 - 60.000

Patek Philippe Nautilus has become one of the most iconic watches of the century. Going back in history, first released in 1976, the ref. 3700 was the creation of a genius in the field, Gerald Genta, who also designed the greatest rival of all, the Audemars Piguet Royal Oak four years earlier. It was while dining just a few feet from Patek Philippe executives he was inspired by a ship's porthole constructed via a solid one-piece case with an octagonal bezel. At the heart of the watch is housed the caliber 28-255C, slender and refined in its profile of just 3.15 mm, it is considered one of the most legendary movements ever produced. The example we offer is in totally original condition and is a truly iconic vintage piece that has been timeless and in great demand for over 45 years.







**528.**

MARK&DARNÒ LUNAR DAY PROTOTYPE 0/0, EN ACIER - Vers 2023

Reference LUNAR DAY

Serial N° 0/0

Year: 2023

Material: Stainless Steel

Dimensions: 39mm

Caliber: Automatic, ETA 2824-2, modified to support the complication

Crystal: Sapphire

Bracelet: Leather with stainless steel buckle

Accessories: Certificate of prototype from the watchmaker

Lot offered with no reserve price

O.I.

This beautiful and complicated prototype was produced by the Italian watchmaker Marco Guarino. The "Lunar Day" display a Moonphase with an error of 57 seconds to the lunation (the basis of moonphase watches have an error of 44 minutes to the lunation). The disc representing the moon has the characteristic of completing a revolution with a delay of 50 minutes every day. This is because it is the average delay necessary for the moon to return to the same meridian. The complication plate is 34mm in diameter; each component was designed and manufactured by Marc&Darnò using traditional methods.

The base caliber is a modified ETA 2824-2 to support the complication which was designed and manufactured to have astronomical data on the moon never shown on a wristwatch.

This surprising watch is the prototype of the project which could vary from the original and therefore probably a unique piece. Accompanied by the prototype certificate, it is a very interesting watch for enthusiasts.





**529.**

DANIEL ROTH ATHYS, RÉF. 108.Z, OR ROUGE - Vers 2015

Reference N° 108.Z

Serial N° 12/15

Year: 2015

Material: 18k Red gold

Dimensions: 41mm

Caliber: Manual cal. DR 651

Crystal: Sapphire

Bracelet: leather with gold DR deploying buckle

Accessories: original presentation box and warranty

€ 15.000 - 18.000

Atis in Latin means purity. For Daniel Roth, Athys is a homage to both understated lines of the simple «Hours-Minutes-Seconds» watch and to the centuries-old tradition of watchmaking. The white lacquer dial shows the hours in black Roman numerals, bordered by a minute circle in Arabic numerals. The three-arm hand, emblem of Daniel Roth, indicates the seconds. This manually-wound IC series 952 movement elaborated in the 1950's, entirely hand-decorated in house at the Daniel Roth manufacture and revealed through the open case back. This fascinating timepiece is produced in a limited edition of 35 numbered pieces, 15 in white gold, 15 in red gold and 5 in platinum. In very good condition with the magnificent presentation set this watch is a rare collectible piece.





**530.**

AUDEMARS PIGUET ROYAL OAK DAY-DATE, RÉF. 25594SA, EN OR ET ACIER - Vers 1992

Reference N° 25594 SA  
Serial N° 1259  
Year: 1992  
Material: Stainless steel and gold  
Dimensions: 36mm  
Caliber: Automatic  
Crystal: Sapphire  
Bracelet: Stainless steel and gold  
Accessories: Original box and service dated 2017

€ 16.000 - 22.000

The Royal Oak ref. 25594 is the version with additional moon phase of the reference 5572 launched in 1984 and 1983 respectively. The ref. 25594 remained in the brand's catalog until 2006. According to Audemars Piguet, half of this reference was produced in steel; and the remaining half divided between steel and gold, and gold. The size of 36mm together with this splendid dial with moon phase make it a highly sought after object. In good condition, currently working and with original box and Audemars Piguet Rome service dated 2017.





**531.**  
AUDEMARS PIGUET CADRAN POUR ROYAL OAK DAY-DATE 25594

White dial for Audemars Piguet Royal Oak Day-Date ref. 25594, 26mm diameter, models from 1984 to 2006.

€ 500 - 700

In original good conditions.



**532.**  
PATEK PHILIPPE CADRAN POUR CALATRAVA - Vers 1950

White dial for Patek Philippe Calatrava, with gold Breguet numbers and gold Breguet hands.  
Dimensions: 28mm

O.I.

Dial in good condition; with some small marks on the edge where it rests on the case. Without feet; to be custom installed based on the movement plate.

**533.**  
F.P. JOURNE, PARAPLUIE, ACCESSOIRE OFFICIEL

Official umbrella F.P. Journe, official accessory, length 101,5cm.

O.I.

New never used.



**534.**  
RÉVOLUTION 1 ÉDITION ITALIENNE - Vers 2007

First edition in Italy of the famous watch magazine Revolution, autumn 2007

O.I.

In like new condition, still in the original film, to be opened and leafed through.





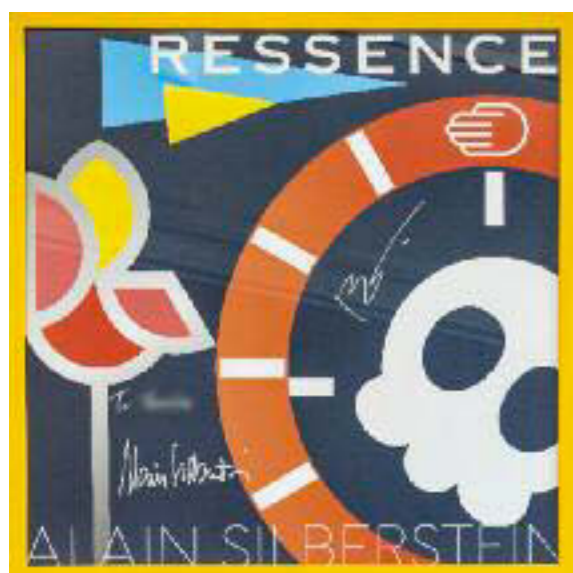
**535.**

GRAIL WATCH 1: RESSENCE X ALAIN SILBERSTEIN "CARPE DIEM", EN ACIER - Vers 2022

Reference N° Grail Watch 1  
 Serial N° 25/36  
 Year: 2022  
 Material: Titanium  
 Dimensions: 42mm  
 Caliber: Automatic with ROCS 1 module  
 Crystal: Sapphire  
 Bracelet: Leather with titanium original buckle  
 Accessories: Original box, warranty, Revolution edition small glass & painting dedicated from Alain Silberstein

€ 45.000 - 65.000

The Grail Watch is an important and futuristic project of contemporary watchmaking, which sees the collaboration of multiple master watchmakers and artists as we are starting to see lately, who together create a work of art on the wrist. The collaboration between Benoît Mintiens, the founder of Ressence Watches, and the iconic Alain Silberstein, the first man to bring art, architecture and playfulness to modern watchmaking, began with the creation of the first watch, the Grail Watch 1, which is based on case of Ressence's Type 1, which is a masterpiece of formed art. The dial itself is convex following a 125mm radius, making it easy to read from all angles and beautifully sculptural. Arching is a boxed sapphire crystal that is curved in two axes and treated with a double anti-reflective coating. It was also decided to leave the case clean without the crown, which instead was replaced by a lever system like the one found on older alarm clocks on the back of its beautifully finished grade 5 titanium case. The size of the watch is 42mm, but since it's actually almost lugless, it wears like a smaller 40mm watch. For the dial, Alain Silberstein inspired by the memento mori, the skull, as an indicator of the seconds, the flower is the indicator of the hours, the yellow triangle as an indicator of the day of the week. And that's how the Grail Watch 1: Ressence x Alain Silberstein was born.





**536.**

DE BETHUNE DBD 3/8, REF DBD WS1, EN OR BLANC - Vers 2006

Reference N° DBD WS1  
Serial N° 3/8  
Year: 2006  
Material: 18k White gold  
Dimensions: 42mm  
Caliber: Manual, cal. DB2424  
Crystal: Sapphire  
Bracelet: Leather with white gold buckle  
Accessories: Box and warranty

€ 100.000 - 150.000

This piece stands out not only for its very original and very contemporary display, but also for its rarity: the series was produced in a very limited edition, 8 pieces we read in the book "De Bethune - L'Art Horloger au XXIème Siècle", this specific watch was the first to be produced in white gold with a particularly elegant tone-on-tone anthracite tone-on-tone dial. When, in 2006, De Bethune rethought the entire architecture, explored new codes and boldly interpreted a digital display for an instantaneous calendar with days, date and month, jumping hours and minutes, the result exceeded all expectations. A new caliber and a dial like no other: understated, pure and elegantly revealing - a first - the Côtes De Bethune. This exceptional finish is also an expression of rare quality as it requires a very special touch, evoking a precious fabric woven to subtly catch and reverberate the light. On the caseback, a blued titanium sky not only captures the complex beauty of the celestial vault, but brings it to life, with embedded gold stars and the signature De Bethune moon in blued steel and palladium rotating on its axis - a dazzling sight, which completes this vibrant and profound tableau. Beating at a frequency of 28,800 vibrations per hour, the caliber developed for this DBD features the patented titanium balance wheel, a De Bethune exclusive, which increases the power reserve by twenty percent (up to 6 days) and the "triple parachute" shock absorption system, also patented by De Bethune, for effective protection. Ultimately, this watch takes the codes of classic watchmaking and transposes them into the modern age.





**537.**  
BULGARI MILANO, EN CARBONE - Vers 1994

Serial N° 278/1000  
Year: 1994  
Material: Carbon  
Dimensions: 34mm  
Caliber: Automatic  
Crystal: Mineral  
Bracelet: Leather with black PVD buckle

€ 400 - 800

Special edition Bvlgari Milano in limited edition n. 278 / 1000 - actually not working service will be needed.

**539.**  
ROLEX PRECISION, RÈF. 6694, EN ACIER - Vers 1978

Reference N° 6694  
Serial N° 5731318  
Year: 1978  
Material: Stainless steel  
Dimensions: 34mm  
Caliber: Automatic  
Crystal: Plexiglas  
Bracelet: Stainless steel

€ 1.200 - 1.600

In good conditions, dial with signs of restoration and actually working, service may be expected.



**538.**  
ROLEX OYSTER PERPETUAL, RÈF. 1002, EN ACIER - Vers 1967

Reference N° 1002  
Serial N° 1678501  
Year: 1967  
Material: Stainless steel  
Dimensions: 34mm  
Caliber: Automatic  
Crystal: Plexiglas  
Bracelet: Stainless steel

€ 1.800 - 2.200

In good conditions and actually not working, service to be expected.



**540.**  
ROLEX DATE, RÈF. 1500, EN ACIER - Vers 1972

Reference N° 1500  
Serial N° 3155095  
Year: 1972  
Material: Stainless steel  
Dimensions: 34mm  
Caliber: Automatic  
Crystal: Plexiglas  
Bracelet: Stainless steel

€ 2.000 - 3.000

In good conditions and actually working, service may be expected.





**541.**

ROLEX OYSTR PERPETUAL, RÉF. 6284, EN ACIER - Vers 1962

Reference N° 6284  
Serial N° 937500  
Year: 1962  
Material: Stainless steel  
Dimensions: 34mm  
Caliber: Automatic  
Crystal: Plexiglas  
Bracelet: Stainless steel

€ 1.800 - 2.200

In good conditions, dial with patina and actually working, service may be expected.

**543.**

ROLEX OYSTER SHOCK-RESISTING, RÉF. 6244, EN ACIER - Vers 1962

Reference N° 6244  
Serial N° 920708  
Year: 1962  
Material: Stainless steel  
Dimensions: 31mm  
Caliber: Manual  
Crystal: Plexiglas  
Bracelet: Leather with stainless steel Rolex buckle

€ 1.400 - 1.800

In good conditions, dial patinated and original, actually working



**542.**

ROLEX PRECISION, RÉF. 6420, EN ACIER - Vers 1957

Reference N° 6420  
Serial N° 291722  
Year: 1957  
Material: Stainless steel  
Dimensions: 30mm  
Caliber: Manual  
Crystal: Plexiglas  
Bracelet: Stainless steel

€ 1.400 - 1.600

In good conditions, dial with patina and actually working, service may be expected.

**544.**

ROLEX OYSTER PEPETUAL 'BUBBLE BACK', RÉF 2940, EN ACIER - Vers 1959

Reference N° 2940  
Serial N° 50\*\*50  
Year: 1959  
Material: Stainless Steel  
Dimensions: 32mm  
Caliber: Automatic  
Crystal: Plexiglas  
Bracelet: Leather with Rolex buckle

€ 1.400 - 1.600

Watch currently working, dial with natural patina in the center, leather bracelet and Rolex buckle.







**545.**  
ROLEX ROYALITE OYSTER, RÉF 3116, EN OR ROUGE - Vers 1944

Reference N° 3116  
Serial N° 32\*\*32  
Year: 1944  
Material: Red Gold  
Weight: 20g  
Dimensions: 29mm  
Caliber: Manual  
Crystal: Plexiglas  
Bracelet: Leather with gold plated Rolex buckle

€ 1.400 - 2.000

A very unusual Rolex in rose gold actually working with leather bracelet and plated buckle.



**546.**  
OYSTER RECORDA, RÉF. 3470, EN OR 14K - Vers 1940

Reference N° 3470  
Year: 1940  
Material: 14k back in stainless steel  
Dimensions: 28mm  
Caliber: Manual  
Crystal: Plexiglas  
Bracelet: Leather with metal buckle

€ 300 - 700

Actually working, service may be expected.

**547.**  
OMEGA "SECTOR DIAL", EN OR JAUNE - Vers 1947

Reference N° 2687  
Serial N° 11165585  
Year: 1947  
Material: 18k yellow gold  
Weight: 40g  
Dimensions: 36mm  
Caliber: Manual, cal. 265  
Crystal: Plexiglas  
Bracelet: leather with metal buckle

€ 1.200 - 1.600

Classic and beautiful condition honeycomb sector dial Omega, actually working.



**548.**  
OMEGA DAY-DATE, EN OR JAUNE - Vers 1980

Serial N° 166\*\*\*40  
Year: 1980  
Material: 18k yellow gold  
Weight: 25g  
Dimensions: 34mm  
Caliber: Omega automatic  
Crystal: Plexiglas  
Bracelet: leather with metal buckle

€ 800 - 1.200

Watch in good conditions, movement need to be serviced, actually not working.





**549.**  
OMEGA SEAMASTER COSMIC, PLAQUÉE OR - Vers 1980

Reference N° 166036  
Serial N° T00L107  
Year: 1980  
Material: Gold plated  
Dimensions: 35mm  
Caliber: Automatic Omega  
Crystal: Plexiglas  
Bracelet: Leather with steel buckle

O.I.

Watch in original good condition, currently working.

**551.**  
ROLEX PRECISION "RAI" EN OR JAUNE - Vers 1963

Reference N° 8961  
Year: 1963  
Material: 18k yellow  
Weight: 28g  
Dimensions: 33mm  
Caliber: Manual  
Crystal: Plexiglas  
Bracelet: leather with metal buckle

€ 1.500 - 2.000

Watch in good and working condition, monobloc case with engraving on the back  
"La Rai a Angelo Paolini 9/19/63"



**550.**  
LONGINES ULTRA-CHRON, EN OR JAUNE - Vers 1980

Year: 1980  
Material: 18k yellow gold  
Weight: 31g.  
Dimensions: 35mm  
Caliber: Automatic Longines Ultra-Chron  
Crystal: Plexiglas  
Bracelet: Leather with steel buckle

O.I.

Watch in original good condition, currently working.



**552.**  
ROLEX MONTRE DE POCHE CONVERTIE, EN ARGENT - Vers 1920

Serial N° 263270  
Year: 1920  
Material: Silver  
Dimensions: 33mm  
Caliber: Manual  
Crystal: Plexiglas  
Bracelet: Leather with metal buckle

€ 600 - 800

In good conditions, dial with patina and actually working, service may be expected.





**553.**  
PIAGET POLO, EN OR JAUNE - Vers 1980

Reference N° 761 C 701 D  
Serial N° 362479  
Year:1980  
Material: 18k yellow gold  
Dimensions: 26mm  
Caliber: Quartz  
Crystal: Sapphire  
Bracelet: Integrated 18k Yellow Gold

€ 3.000 – 5.000

Iconic Polo in yellow gold by Piaget, very good conditions and actually working.



**554.**  
ZENITH DEFY, ACIER - Vers 1970

Serial N° 401\*\*7038  
Year: 1970  
Material: Stainless Steel  
Dimensions: 37mm  
Caliber: Automatic  
Crystal: Sapphire  
Bracelet: Stainless Steel  
Accessories: Original Box and Tag

O.I.

Watch in like new condition, with original box and tag, currently working. Iconic model from the 70s.



**555.**

OMEGA x SWATCH MOONSWATCH COLLECTION, 10/11 - Vers 2022

Collection of 10 MoonSwatch by Omega and Swatch, missions:

- Sun
- Mercury
- Venus
- Earth
- Moon
- Mars
- Jupiter
- Saturn
- Uranus
- Pluto

€ 2.600 – 3.500

These amazing tributes to the planets pay homage to the collaboration between the revolutionary Swiss company Swatch and Omega's iconic Speedmaster Moonwatch. What makes this collection truly stellar is the fusion of highly innovative Swatch Bioceramic material with the key design elements of the OMEGA Speedmaster Moonwatch. All dials feature OMEGA X Swatch branding, the iconic Speedmaster logo and the new MoonSwatch logo. A closer look at the structure of the glass reveals the "hidden S" integrated in the centre. The circular motif on the outer disc of the dial and the sub-dials lends a refined touch to the model, complementing the slim and harmonious structure of the lugs. The chronograph hours, minutes and seconds hands and hour markers feature the Superluminova treatment, for perfect phosphorescence in the dark. Each battery cover on the back features an image of the celestial body that inspired the design. All the 10 watches are in like new conditions with box and warranty.











549.  
Omega  
Seamaster Cosmic



550.  
Longines  
Ultra-Chron



551.  
Rolex  
Precision 'Pair'



552.  
Rolex  
Pocket Converter



553.  
Patek  
Polo



554.  
Zenith  
Lady



555.  
Omega  
Moonwatch Collection



lot 526

TÉLÉCHARGER LE E-CATALOGUE COMPLET  
BROWSE THE FULL-CATALOGUE

INSCRIVEZ-VOUS POUR ENCHÉRIR EN LIGNE  
REGISTER TO BID ONLINE

| [www.wannengroup.com](http://www.wannengroup.com)







lot 535

# WANNENES

PROPERTIES



This enchanting, aristocratic estate is surrounded by an expanse of greenery. The entire property, whose construction dates back to the 18th century, is divided into five separate buildings immersed in 200 hectares of land, extraordinary for its privacy and tranquility. The estate includes two swimming pools and an equestrian arena. Despite various restoration and renovation works that have taken place over the years, the property retains its majestic style and period features, while providing modern style and comfort. Attention to detail makes this prestigious villa a perfect balance of simplicity and elegance.

Scopri di più



+39 02 72023790  
[properties@wannenesgroup.com](mailto:properties@wannenesgroup.com)



## INFORMATIONS IMPORTANTES POUR LES ACHETEURS

### CONDITIONS DE VENTE

La participation à la vente aux enchères implique l'acceptation pleine et inconditionnelle des Conditions Générales de Vente contenues ci-après dans le catalogue. Il est conseillé aux acheteurs de lire attentivement cette section contenant les conditions d'achat des lots proposés à la vente par ART CONTACT SARL (ci-après ART CONTACT).

### ESTIMATION

Une estimation indicative pour les acheteurs potentiels est donnée à côté de chaque description des lots dans le catalogue. En tout état de cause, tous les lots, en fonction de l'intérêt du marché, peuvent atteindre des prix supérieurs et inférieurs aux valeurs estimées indiquées. Les estimations imprimées sur le catalogue de la vente aux enchères peuvent faire l'objet d'une révision et n'incluent pas les frais d'achat et la TVA.

### RÉSERVE

Le prix de réserve correspond au prix minimum confidentiel convenu entre ART CONTACT et le vendeur, en dessous duquel le lot ne sera pas vendu. Les lots offerts sans réserve sont indiqués sur le catalogue avec une estimation en rouge ou avec la mention O.I. et sont adjugés au plus offrant indépendamment des estimations publiées.

### EXPOSITION AVANT LA VENTE AUX ENCHÈRES

Chaque vente aux enchères est précédée d'une exposition ouverte au public gratuitement, dont les horaires sont indiqués dans les premières pages de ce catalogue. L'exposition entend permettre aux acheteurs d'examiner les lots en vente et d'en vérifier les qualités telles que, par exemple, l'authenticité, l'état de conservation, le matériau, l'origine, etc.

### ACHAT DE MONTRES

Les descriptions des montres figurant dans le catalogue, qu'il s'agisse de montres de poche, de montres-bracelets, de montres domestiques ou de montres d'autre type, y compris leur état de conservation et les restaurations éventuelles, sont fournies à titre d'orientation pour les acheteurs potentiels, mais ne peuvent en aucun cas être considérées comme exhaustives. Même le rapport d'état que ART CONTACT enverra sur demande de l'acheteur potentiel n'est pas complètement exhaustif et pourrait ne pas indiquer des défauts ou des restaurations. Ces rapports d'état sont réalisés par nos Experts après l'analyse réelle des pièces, mais sur une base subjective et ne constituent pas de déclaration ou d'élément de garantie pouvant remplacer l'examen direct de la part des personnes souhaitant acheter.

Toutes les montres doivent donc d'abord être correctement examinées par l'acheteur potentiel, afin d'évaluer pleinement leur état esthétique, mécanique et fonctionnel. Les lots sont vendus tels quels, et le fait de ne pas indiquer un défaut ou une restauration ne signifie pas qu'un tel défaut ou une telle restauration n'existe pas. Les montres, en tant que biens de nature mécanique et d'usage, sont par leur nature, des objets utilisés et entretenus, et, le cas échéant, réparés, au cours de leur vie : elles sont analysées par les Experts de ART CONTACT lors de la préparation de la vente aux enchères, mais la Maison de Vente aux enchères n'assume aucune garantie sur leur état de fonctionnement, la présence de pièces non d'origine ou de restaurations.

Dans le cas des montres-bracelets déclarées étanches par le fabricant, leur examen en a exigé l'ouverture : ART CONTACT suggère, par conséquent, que l'acheteur les em-mène à un centre d'assistance agréé, avant leur utilisation en présence d'eau, afin d'en vérifier leur étanchéité.

En cas de mouvements au quartz, les informations concernant leur état de fonctionnement et l'état de charge de la batterie lors de la vérification de la part des Experts, ne sont pas fournies. Les documents concernant les montres ne sont pas présents, sauf indication contraire. Les bracelets, sauf indication contraire, doivent être considérés comme non originaux. Les bracelets, étuis ou boîtiers ou autres parties des enveloppes en matière organique, le cas échéant, sont exposés montés lors de la pré-vente à des fins de présentation uniquement : les acheteurs potentiels sont conscients que l'importation dans les pays étrangers de matières provenant d'espèces me-

nacées, telles que, par exemple, la tortue et l'ivoire, est soumise à la convention internationale CITES. Il est donc essentiel que l'acheteur potentiel s'informe de manière adéquate, à un stade préliminaire, sur ces restrictions, s'il a l'intention de participer à l'enchère pour un lot qui contient, même en partie, des matériaux de ce type. Les indications concernant le poids, si elles figurent dans le catalogue ou dans le rapport d'état, doivent être considérées comme brutes et purement indicatives, ainsi que les dimensions des boîtiers et la nature et le caratage réel de toutes pierres précieuses ou autres matériaux précieux présents.

### ÉTAT DE CONSERVATION

Les propriétés sont vendues à leur état actuel. Par conséquent, nous conseillons aux acheteurs de s'assurer de l'état de conservation et de la nature des lots, en les examinant avant la vente. Les experts de ART CONTACT se feront un plaisir de vous fournir sur demande des rapports d'information sur l'état de conservation des lots à vendre. Les descriptions dans les catalogues représentent uniquement l'opinion de nos experts et peuvent faire l'objet de toute révision qui sera communiquée au public pendant la Vente aux enchères.

### PARTICIPATION À LA VENTE AUX ENCHÈRES

La participation à la vente aux enchères peut se faire en étant présent dans les salles ou par des offres écrites et téléphoniques que ART CONTACT aura le plaisir de réaliser au nom et pour le compte d'acheteurs potentiels. Veuillez noter que le service est gratuit et qu'aucune responsabilité ne peut donc être imputée à ART CONTACT qui ne sera pas responsable des offres involontairement non exécutées ou des erreurs relatives à l'exécution de celles-ci. Les nouveaux acheteurs doivent fournir des références bancaires adéquates au moyen d'une lettre de présentation de leur banque adressée à ART CONTACT, 6 avenue Saint Michel, 98000 Monaco.

### PARTICIPATION EN SALLE

Afin de participer en salle, les acheteurs potentiels doivent s'enregistrer et retirer le numéro de participation prévu en remplissant le Formulaire de Participation à la vente aux enchères, sous présentation d'une pièce d'identité. Tous les lots vendus seront facturés au nom et à l'adresse indiqués lors de l'attribution du numéro de participation et ne pourront pas être transférés à d'autres noms et adresses. Si un acheteur potentiel souhaite participer à la vente aux enchères au nom et pour le compte d'un tiers, il doit en informer la direction de ART CONTACT avant les enchères.

### OFFRES ÉCRITES ET OFFRES PAR TÉLÉPHONE

Pour participer au moyen d'offres écrites et par téléphone, les acheteurs potentiels doivent remplir l'Ordre d'Achat publié dans ce catalogue et l'envoyer par courriel à in-fo@artcontactmonaco.com au plus tard 7 heures avant le début de l'enchère. Les offres doivent être faites en euros et ne doivent pas inclure les droits et taxes de vente aux enchères prévus par la loi.

Les offres écrites sont faites au nom de l'offrant au prix le plus bas possible en tenant compte du prix de réserve et des autres offres. Les offres écrites faites sur des lots sans réserve (marqués d'une estimation en rouge), en l'absence d'une offre plus élevée seront adjugées à environ 50 % de l'estimation minimale ou au montant correspondant à l'offre, même si elle est inférieure à 50 % de l'estimation minimale.

Les Offres par Téléphones seront organisées par ART CONTACT dans les limites de la disponibilité des lignes téléphoniques et uniquement pour les lots dont l'estimation maximale est au moins 500 euros. Les appels téléphoniques pendant l'Enchère pourront être enregistrés. Les acheteurs potentiels contactés par téléphone acceptent l'enregistrement de leurs conversations.

### LIVE BID

Il est possible de participer aux enchères live sur le site web www.wannesgroup.com dans la section « enchères on air » et en suivant toutes les instructions écrites.

### ADJUDICATIONS

Le coup de marteau indique l'adjudication du lot et à ce moment, le lot adjudiqué est placé sous l'entière responsabilité de l'acquéreur. En sus du prix d'adjudication, l'acquéreur devra payer au profit de ART CONTACT les droits de vente et les charges fiscales prévues par les lois en vigueur.

### PAIEMENT

Les acquéreurs devront effectuer le paiement des lots au plus tard après 10 jours ouvrables à compter de la date de la vente aux enchères par les moyens suivants :

A) Espèces, selon les conditions légales en vigueur dans la Principauté de Monaco.  
B) Bank transfer payable to ART CONTACT SARL:  
Bank: SOCIETE DE BANQUE MONACO  
IBAN: MC58 1209 8041 2510 7244 0020 046  
SWIFT BIC: SDBMMCM2XXX

C) Quelques cartes de crédit/débit sont acceptées moyennant une commission sur le montant total pour les cartes étrangères. Veuillez contacter Art Contact pour plus d'informations.

ART CONTACT peut, en accord avec le vendeur, offrir aux acheteurs la possibilité de payer les lots achetés en différé s'ils le jugent fiable. Les acheteurs potentiels souhaitant accéder à un paiement échelonné doivent contacter la direction de ART CONTACT avant la vente.

### RETRAIT DES LOTS

Les acquéreurs devront effectuer le retrait des lots au plus tard après 15 jours ouvrables à compter de la date de la vente aux enchères. Passé ce délai, ART CONTACT ne sera plus tenu de garder et ne sera pas responsable des dommages qui pourraient être causés aux lots qui pourront être transférés dans un entrepôt prévu à cet effet. ART CONTACT facturera à l'acheteur les frais d'assurance et de stockage selon le tableau mis à la disposition des clients sur place. Lors du retrait du lot, l'acquéreur devra présenter à ART CONTACT une pièce d'identité. Si l'acquéreur demande à un tiers de retirer les lots payés, le tiers doit être en possession d'une procuration écrite de l'acquéreur et d'une photocopie de la pièce d'identité de l'acquéreur. Les lots ne seront livrés à l'acheteur ou à la personne déléguée qu'après paiement.

En cas de retard dans le retrait des lots achetés, la maison de vente aux enchères se réserve le droit de facturer des frais de stockage (par mois ou partie de mois), qui sont indiqués ci-dessous à titre indicatif :

€ 100 HT pour les meubles  
€ 50 HT pour les tableaux  
€ 25 HT pour les objets d'art

### ENVOI DES LOTS

ART CONTACT se fera un plaisir de s'occuper de l'envoi des lots achetés, en suivant les indications communiquées par écrit par les acheteurs et après paiement complet. L'expédition se fera aux risques et frais de l'acheteur qui doit dégager ART CONTACT de toute responsabilité à cet égard par écrit. Notre personnel est également disponible pour l'évaluation et les conseils sur toutes les méthodes d'expédition et l'assurance lot.

### EXPORTATION DES BIENS CULTURELS

Des certificats d'exportation pourront être nécessaires pour certains achats et, dans certains cas, une autorisation douanière pourra être également requise. L'État français a faculté d'accorder ou de refuser un certificat d'exportation au cas où le lot est réputé être trésor national. ART CONTACT n'assume aucune responsabilité du fait des décisions administratives de refus de certificats pouvant être prises.

### DROIT DE PRÉEMPTION

L'État français peut exercer sur toute vente publique d'œuvre d'art un droit de préemption sur les biens proposés à la vente. L'exercice de ce droit s'effectue par l'intermédiaire d'un représentant de l'État présent dans la salle. L'État dispose d'un délai de 15 jours à compter de la vente publique pour confirmer l'exercice de son droit de préemption. En cas de confirmation, l'État se subroge à l'adjudicataire.

### MISES EN GARDE

Tous les lots contenant des composants électriques doivent être proposés à la vente comme étant hors d'usage et doivent être entièrement révisés. ART CONTACT ne saurait être tenu responsable de la mauvaise utilisation des lots vendus ou du non-respect des mises en garde.

Nous vous rappelons la nécessité, avant d'utiliser les lots, de faire vérifier le fonctionnement correct de toutes les pièces électriques par l'expert et la personne de confiance de l'acheteur.

La mention "...ans..." ou la date indiquée dans la description du lot indique la période de début de production du lot concerné, sauf indication contraire.

Les images descriptives dans le catalogue et sur le site peuvent ne pas représenter fidèlement les lots offerts aux enchères. La maison de vente aux enchères recommande toujours de visionner directement les œuvres avant de présenter une offre.

S'il n'est pas possible de voir les lots en personne, un rapport d'état peut être demandé pour recevoir des images détaillées supplémentaires des objets.

L'acheteur autorise expressément ART CONTACT à utiliser gratuitement les photographies des lots à vendre aux enchères à toutes fins, dont aucune n'est exclue et/ou exceptée, y compris mais sans s'y limiter à la publicité, la distribution via Internet et/ou par tout autre moyen, la publication dans sur Magazine et/ou revues, qu'ils soient édités par l'acheteur ou par des tiers.

### NOMENCLATURE

Les affirmations concernant l'auteur, l'attribution, l'origine, la période, la provenance et les conditions des lots dans le catalogue doivent être considérés comme opinion personnelle des experts et des studios éventuellement consultés, et non une donnée factuelle.

TIZIANO: l'œuvre, selon nous, est l'œuvre de l'artiste.

ATTRIBUÉ À TIZIANO: l'œuvre, selon nous, est probablement l'œuvre de l'artiste, mais il n'y a pas de certitude.

ATELIER DE TIZIANO: l'œuvre, à notre avis, est l'œuvre d'un peintre inconnu de l'atelier de l'artiste qui l'a peut-être exécutée sous sa supervision ou non.

ENTOURAGE DE TIZIANO: l'œuvre, à notre avis, appartient à un peintre inconnu, mais distinguable, lié à l'artiste précité, mais sans nécessairement avoir une relation d'album-nat.

STYLE DE/DISCIPLÉ DE TIZIANO: l'œuvre est, à notre avis, d'un peintre, contemporain ou presque contemporain, qui travaille dans le style de l'artiste, sans nécessairement être lié à lui par une relation d'album-nat.

MANIÈRE DE TIZIANO: l'œuvre, à notre avis, a été exécutée dans le style de l'artiste, mais dans une période successive.

DE TIZIANO: l'œuvre, à notre avis, est une copie d'un tableau de l'artiste.

EN STYLE...: l'œuvre, à notre avis, est dans le style mentionné, mais d'une période ultérieure.

SIGNÉ - DATÉ - INSCRIT: À notre avis, la signature et/ou la date et/ou l'inscription sont de l'artiste.

PORTANT SIGNATURE- DATE - INSCRIPTION: A notre avis, la signature et/ou la date et/ou l'inscription ont été ajoutées.

Les dimensions données sont d'abord la hauteur puis la largeur.

## BUYING AT ART CONTACT - WANNENES

### CONDITIONS OF SALE

Taking part in an Auction implies the entire and unconditional acceptance of the Conditions of Sale outlined in this Catalogue. Bidders are required to read carefully the section of the Catalogue containing the purchase terms of the Lots for sale by ART CONTACT SARL (hereafter ART CONTACT).

### ESTIMATES

Beside each Lot description in the Catalogue there is an indication of the Estimate for potential Purchasers. In each case, all the Lots, in light of market interest, may achieve prices that are either superior to or inferior to the indicated Estimates. The Estimates published in the Auction Catalogue may be subject to revision and do not include the purchase commission (buyer's premium) and VAT.

### RESERVE

The reserve price corresponds to the minimum price agreed upon between ART CONTACT and the SELLER, beneath which the Lot will not be sold. Lots offered with no reserve are indicated in the Catalogue with the Estimate in RED and with the description O.I. These Lots are sold to the highest Bidder independently of the published Estimates.

### VIEWING BEFORE THE AUCTION

Each Auction is preceded by a Viewing which is open, admission free, to the public. Opening times are shown in the first few pages of this Catalogue. The Viewing enables all Purchasers to undertake an appropriate examination of the Lots for sale and to verify all aspects related to the Lot, such as authenticity, state of preservation, materials and provenance etc.

### WATCH AND CLOCK SALES

The descriptions in the catalogue for watches and clocks in relation to preservation and/or restorations are given as guidelines to the prospective buyer but may under no circumstance be considered all-inclusive.

The Condition Reports which ART CONTACT may send, on request of a prospective buyer, do not reflect an exhaustive description and some restorations or imperfections may not be mentioned.

Condition Reports are statements of opinion given by our Experts and are purely subjective and do not constitute a guarantee that may substitute a direct examination by the prospective buyer.

Prospective buyers should personally inspect the condition of each lot in order to ascertain its effective state, both from the technical and the aesthetical points of view.

Lots are sold in their present state and the fact that an imperfection or a restoration is not mentioned does not imply that the imperfection or restoration does not exist. Watches, because of their mechanical and functional nature, are normally used and kept up and possibly repaired, in the course of their existence: they are examined by the Experts of ART CONTACT prior to the sale, but ART CONTACT gives no guarantee that they are in working order, free of repairs or in the presence of non-original parts.

Wristwatches in water-resistant cases have been opened to examine their movements: therefore, ART CONTACT suggests that such a watch be controlled by an authorized dealer before using the same in conditions where water is present.

As concerns quartz movement watches, no information is given about working order if the battery, at the moment of examination, is discharged.

All documents regarding watches, if not otherwise specified, are not present.

All straps and bracelets, if not otherwise specified, are not to be considered original.

Straps made of organic material are associated with the watch for display

purposes only: prospective buyers are aware that the importation to foreign countries of materials derived from endangered or otherwise protected species (purely as an example: tortoiseshell, ivory) are subject to CITES international rules.

Prospective buyers should therefore acquire the necessary information on such restrictions prior to their participation in the sale for lots containing, even though partially, materials falling under these rules.

Indications of weight, if included in the Condition Report, are to be considered gross and purely indicative, as are weights in carats of precious stones, indications of the nature of precious stones or other precious materials and measures of cases.

### STATE OF PRESERVATION

The Lots are sold in their current state. We recommend, therefore, that potential Purchasers check the state of preservation of the Lots/s, as well as the type of Lot/s being offered, before the Sale. The Experts of ART CONTACT will be happy to provide upon request reports on the state of preservation of the Lots on sale. The descriptions in the Catalogues merely represent the opinion of our Experts and may be subject to further revisions that will, in due course, be given to the public during the Auction.

### TAKING PART IN AN AUCTION

Taking part in an Auction may occur by means of the Bidder being present in the Auction Room, or by means of written or telephone Bids that ART CONTACT will gladly carry out for potential Purchasers. This service is free of charge and, therefore, ART CONTACT bears no form of responsibility for this service. ART CONTACT will, therefore, not be responsible for any Bids inadvertently mislaid or for mistakes in relation to the latter. New Purchasers will have to provide sufficient bank references by means of a Presentation Letter supplied by the Purchaser's bank to ART CONTACT, 6 avenue Saint Michel, 98000 Monaco.

### BIDDING IN PERSON

In order to bid in person, potential Purchasers have to register and collect a bidding number by filling out the Bidding Form and providing a valid document of identification and tax code number. All Lots sold will be invoiced to the name and address supplied when collecting the Bidding Number and they will not be able to be transferred to other names and/or addresses. Should a potential Purchaser wish to bid on behalf of a third party, s/he should inform ART CONTACT before the beginning of the Auction.

### ABSENTEE AND TELEPHONE BIDS

In order to bid by means of written or telephone Bids potential purchasers have to fill out the Bidding Form in this Catalogue and send it by fax to the number +39 010 2517767 or email to info@artcontact-monaco.com at least SEVEN hours before the beginning of the Auction. Bids must be in euro and do not include Auction commissions and charges and taxation as laid down by the Law. Written Bids are carried out on behalf of the Bidder at the lowest price possible in consideration of the reserve price and the other Bids offered. In the absence of a higher Bid, written Bids undertaken on Lots without a reserve (indicated by the Estimate in RED) will be sold at approximately 50% of the lowest estimate or at the figure corresponding to the Bid, even though lower than 50% of the lowest Estimate. Telephone Bids are organised by ART CONTACT according to the availability of the telephone lines being used and exclusively for Lots that have a maximum Estimate of at least 500 euro. Telephone calls during the Auction may be recorded. Potential purchasers who bid by telephone consent to the recording of their conversations.

### LIVE BIDDING

You can bid online going on the website [www.wannenesgroup.com](http://www.wannenesgroup.com) - on the on-air sale section and following the instructions

### HAMMER PRICE

The Hammer Price indicates that a Sale of a Lot has been made and at that moment the Purchaser assumes full responsibility for the Lot. As well as the hammer price the Purchaser has to recognise the commissions (buyer's premium) to be paid to ART CONTACT and the taxes to be paid as laid down by the Law.

### PAYMENT

Purchasers have to carry out payment for the Lot/s by 10 working days from the date of the Auction by means of:

A) Cash payments are accepted, according to the law of Principality of Monaco.

B) Bank transfer payable to ART CONTACT SARL:  
Bank: SOCIETE DE BANQUE MONACO  
IBAN: MC58 1209 8041 2510 7244 0020 046  
SWIFT BIC: SDBMMCM2XXX

C) Certain credit/debit cards are accepted with a surcharge on the total invoice value for foreign cards. Please contact ART CONTACT for further information.

If paying by bank transfer, the amount received after the deduction of any bank fee and/or conversion of the currency of payment to euro must not be less than the euro amount payable, as set out on the invoice

ART CONTACT may, upon agreement with the Seller, offer those Purchasers it deems reliable the possibility to pay for Lots in instalments. Potential purchasers who wish to undertake payment by instalments should contact the Management of ART CONTACT before the Sale.

### COLLECTION OF LOTS

Purchasers must collect the Lot/s by 15 working days from the date of the Auction. At the end of this span of time, ART CONTACT will not be responsible either for the custody of the Lot/s or for any damage that may occur to the Lot/s upon their removal to an appropriate warehouse. ART CONTACT will charge the Purchaser with the costs of insurance and storage as laid down in the Chart available to Customers in the headquarters of the Company. When collecting the Lot/s, the Purchaser must provide ART CONTACT with a valid document of identity. Should the Purchaser request a Third Party to collect the Lot/s already paid for, the latter should possess a piece of written permission signed by the Purchaser and a photocopy of the Purchaser's document of identity. The Lot/s are given to the Purchaser or the Third Party only upon payment having taken place. If purchased Lot/s are collected after the above-mentioned time limit the Auction House may debit the costs of storage (by month or part of a month) as follows:

100 euro + VAT for Furniture  
50 euro + VAT for Paintings  
25 euro + VAT for Objects of art

### SHIPPING OF LOTS

ART CONTACT staff will be glad to ship Lots purchased according to written instructions given by the Purchaser, following payment of the Lot/s concerned. Shipping will be at the risk and expense of the Purchaser who, by means of a written communication, will have to subtract ART CONTACT from any responsibility concerning such an operation. Furthermore, our Staff is available for evaluations and advice in relation to the shipping methods employed and insurance of the Lot/s.

### EXPORT OF THE LOTS PURCHASED

Certificates of exportation may be required for a cater of lots and a custom authorization may be requested. The French State has the option of giving or not the export license in the case the lot is regarded as national treasure. ART CONTACT has no responsibility in case the export license is denied.

### NOTICE

Every lot with any electric equipment is sold as "not working" and it should be totally re-conditioned. ART CONTACT is not responsible for any incorrect, wrong use of sold lots or for any non-compliance with instructions.

The words "...year...." or the date cited in the lots description indicates the period from when the said lot was first produced, unless otherwise specified.

The descriptive image in the catalogue and website might not faithfully represent the lots at auction. The Auction House always recommends directly viewing the lots before making any bids. In case it is not possible to directly view the lots in person, a bidder may request a condition report in order to receive additional and detailed images of the lot/s. The Purchaser explicitly authorises ART CONTACT to use freely and at no cost the photographs depicting the auction lots for any purpose whatsoever for exemplary - but not necessarily exhaustive purposes - in terms of publicity, internet usage or usage by any other means, as well as publication in the Magazine and/or magazines published by third parties.

### TERMINOLOGY AND DEFINITIONS

Affirmations concerning the Author, attribution, origin, period, provenance and conditions of the Lot/s in the Catalogue are to be considered as the personal opinion of the Experts and Scholars who may have been consulted and do not necessarily represent fact.

TITIAN: in our opinion, the work is the work of the artist.

ATTRIBUTED TO TITIAN: in our opinion, the work is probably by the artist, but there is no absolute certainty.

TITIAN'S WORKSHOP/STUDIO: in our opinion, the work is by an unknown painter working in the artist's workshop/studio who may or may not have undertaken the painting under the artist's supervision.

TITIAN'S CIRCLE: in our opinion, the work is by an unknown painter who is in some way connected or associated to the artist, although not necessarily a pupil of the artist.

STYLE OF/FOLLOWER OF TITIAN: in our opinion, the work is by a painter who was contemporary or almost contemporary to the artist, working in the same style as the artist, without being necessarily connected to him by an artist-pupil relationship.

MANNER OF TITIAN: in our opinion, the work has been carried out in the style of the artist but subsequent to the period of the artist.

FROM TITIAN: in our opinion, the work is a copy of a painting by the artist.

IN THE STYLE OF...: in our opinion, the work is in the style mentioned but from a later period.

SIGNED - DATED - INSCRIBED: in our opinion, the signature and/or date and/or inscription are by the artist.

BEARING SIGNATURE - DATE - INSCRIPTION: in our opinion, the signature and/or date and/or inscription have been added.

The dimensions supplied are HEIGHT first, followed by WIDTH.

## CONDITIONS GÉNÉRALES DE VENTE

- Art. 1** Les marchandises peuvent être vendues en lots ou individuellement à la seule discrétion de ART CONTACT SARL (ci-après ART CONTACT ou Maison de Vente aux Enchères). Les ventes aux enchères se tiendront dans des salles ouvertes au public par ART CONTACT, qui agit uniquement comme agent au nom et dans l'intérêt de chaque vendeur (dont le nom est inscrit dans tous les registres exigés par les lois en vigueur). Les effets de la vente affectent directement l'acheteur et le vendeur. ART CONTACT n'assume aucune responsabilité envers l'adjudicataire, le vendeur ou tout autre tiers en général.
- Art. 2** Les articles sont vendus/adjudgés au plus offrant, et au comptant. En cas de litiges entre plusieurs adjudicataires, le Commissaire-priseur revendra, à sa seule discrétion, les biens qui peuvent être nouvellement adjudgés lors de la même enchère ; en tout état de cause, les adjudicataires ayant causé de tels litiges seront liés par l'offre précé-demment faite qui a donné lieu à la nouvelle adjudication. En l'absence d'une nouvelle adjudication, le Commissaire-priseur, à sa seule discrétion, indiquera qui sera considéré comme adjudicataire du bien. Le transfert des lots attribués à des tiers ne sera pas opposable à ART CONTACT, qui considérera l'adjudicataire comme seul responsable du paiement. La participation à la vente aux enchères au nom et pour le compte de tiers ne peut être acceptée par ART CONTACT qu'après avoir déposé auprès des bureaux de la maison de vente aux enchères, au moins trois jours avant la vente aux enchères, des références bancaires adéquates et une procuration notariale ad negotia.
- Art. 3** ART CONTACT se réserve le droit de retirer tout lot de la vente aux enchères. Le commissaire-priseur conduit l'enchère en commençant par l'offre qu'il juge la plus appropriée, en fonction à la fois de la valeur du lot soumis et des offres concurrentes. Le commissaire-priseur peut placer des offres successives ou en réponse à d'autres offres jusqu'à ce que le prix de réserve soit atteint. Pendant la vente aux enchères, le commissaire-priseur a le droit d'accepter et/ou de séparer les lots et de modifier l'ordre de vente. Le commissaire-priseur peut, à sa seule discrétion, retirer les lots qui n'atteignent pas le prix de réserve convenu entre ART CONTACT et le vendeur.
- Art. 4** En plus du prix d'adjudication pour chaque lot, l'adjudicataire versera à ART CONTACT une prime d'achat de: 22,5% HT (27% TTC)  
Pour les automobiles:  
14% HT (16,80% TTC) jusqu'à 900.000 €  
11% HT (13,20% TTC) au-delà de 900.001 €  
Lots en provenance hors UE, indiqués par un\*\*, sont soumis au frais liés à l'importation.  
ART CONTACT ayant opté pour le régime de la marge, il ne sera délivré aucun document faisant ressortir la TVA.  
La TVA sur commission et les frais liés à l'importation peuvent être rétrocédés à l'adjudicataire sur présentation des justificatifs d'exportation hors UE.
- Art. 5** Afin de garantir la transparence de l'enchère, tous ceux qui souhaitent enchérir doivent remplir un formulaire de participation avec leurs données personnelles et leurs références bancaires. ART CONTACT se réserve le droit de vérifier les références et de refuser la participation des personnes indésirables aux enchères. Lors de la compilation, ART CONTACT délivrera une carte d'identification, numérotée, qui devra être présentée au commissaire-priseur pour enchérir.
- Art. 6** ART CONTACT peut accepter des mandats pour l'achat (par le biais d'offres écrites et téléphoniques) en faisant des offres par l'intermédiaire du Commissaire-priseur, en concurrence avec les participants dans la salle. Dans le cas d'offres identiques, l'offre écrite prévaudra sur l'offre orale.
- Art. 7** Dans le cas de deux offres écrites identiques, qui ne sont pas dépassées par des offres dans la salle des ventes ou par téléphone, ART CONTACT considérera l'offre soumise en premier comme étant l'offre retenue. ART CONTACT se réserve le droit de refuser, à sa seule discrétion, les offres d'acheteurs non connus et/ou indésirables. Par exception partielle à ce qui précède, ART CONTACT peut accepter ces offres si une somme est déposée pour garantir un montant égal à la valeur du lot demandé, plus les commissions, frais et dépenses. En tout état de cause, lors de l'adjudication, l'adjudicataire communiquera immédiatement toutes ses données personnelles et fiscales.
- Art. 8** ART CONTACT agit exclusivement en tant que mandataire des vendeurs, déclinant toute responsabilité quant à la description des objets contenus dans les catalogues et dans toute autre publication explicative. Toutes les descriptions des marchandises doivent être considérées comme purement explicatives et indicatives et ne doivent donner lieu à aucun type de confiance de la part des soumissionnaires retenus. La vente aux enchères sera précédée d'une exposition des biens, afin de permettre un examen correct de ceux-ci par les acheteurs potentiels, de sorte que ces derniers, sous leur responsabilité totale et complète, puissent vérifier toutes les qualités, telles que, par exemple, l'authenticité, l'état de conservation, le type, le matériel, l'origine, l'origine, des biens faisant l'objet des enchères. Après l'adjudication du contrat, personne ne peut s'opposer à ART CONTACT ou aux vendeurs l'absence de toute qualité des biens faisant l'objet d'adjudication. ART CONTACT et ses employés et/ou collaborateurs n'émettront aucune ga-

rantie d'authenticité et/ou quoi que ce soit. Toutes les informations concernant le caratage et le poids des métaux précieux ou des pierres précieuses, ainsi que les marques correspondantes, sont purement indicatives. ART CONTACT n'est pas responsable des erreurs ou des contrefaçons. ART CONTACT ne garantit pas l'exactitude ou l'authenticité des documents, bien qu'ils puissent se référer à des travaux d'experts extérieurs à la maison de vente aux enchères.

L'acheteur exonère la maison de ventes de toute responsabilité quant à la reproduction de couleurs des objets dans le catalogue, qui peut être différente de celle perçue par une vue directe. Les acquéreurs sont invités à examiner les objets avant la vente aux enchères lors de l'exposition, notamment il est conseillé de demander des photos et des rapports sur l'état des lots en plus de ceux déjà présents sur le site et dans le catalogue.

- Art. 9** Les estimations concernant le prix de vente de base, indiquées sous la description de chaque article du catalogue, doivent être considérées nettes de tous frais supplémentaires tels que, par exemple, les droits de vente aux enchères, les taxes, etc. Comme le temps d'impression du catalogue exige la détermination des prix d'estimation bien à l'avance, ils peuvent être sujets à changement, de même que la description de l'objet. Toute modification sera communiquée par le Commissaire-priseur avant le début de l'enchère sur chaque objet concerné, étant entendu que le lot ne sera attribué que si le prix de réserve est atteint.
- Art. 10** Le paiement intégral du prix d'adjudication, des droits d'adjudication et de toute autre dépense accessoire doit être effectué dans un délai de 10 jours ouvrables à compter de la date de la vente aux enchères, dans une monnaie ayant cours légal dans le pays où s'est tenue la vente aux enchères. En cas de non-paiement, sans préjudice du droit d'obtenir des dommages et intérêts encore plus importants, ART CONTACT peut : a) restituer la marchandise au vendeur manqué et exiger de l'acquéreur manqué le paiement des commissions perdues ; b) agir pour faire respecter l'exécution forcée de l'obligation d'achat ; c) vendre le lot par négociation privée, ou lors d'enchères ultérieures, mais au détriment de l'acheteur manqué, en conservant à titre de pénalité les avances versées. Dans le cas où le lot est conservé par ART CONTACT, cela se fera aux risques et frais de l'adjudicataire et du vendeur manquée conjointement. En tout état de cause, à la date d'enlèvement ou de retour, l'adjudicataire paie à ART CONTACT les frais de stockage (par mois ou fraction de mois), comme indiqué ci-dessous à titre indicatif : 100 € HT sur les meubles ; 50 € HT sur les tableaux ; 25 € HT sur les objets d'art. Ce montant sera dû à partir du 16e jour ouvrable suivant la date de l'enchère.
- Art. 11** Après avoir payé les sommes dues, l'adjudicataire, devra retirer les lots achetés au plus tard 15 jours ouvrables à compter de la date de la Vente aux enchères, à son risque, aux frais et par ses soins, en respectant, pour ce faire, l'horaire prévu par ART CONTACT. Dans le cas où l'adjudicataire ne retire pas les lots achetés dans le délai susdit, ART CONTACT les gardera, aux risques et aux frais de l'adjudicataire, dans les locaux objet des enchères pendant cinq autres jours ouvrables. Passé ce délai, ART CONTACT peut faire transporter les marchandises, toujours aux risques et frais de l'adjudicataire, chez un autre dépositaire, ou autre entrepôt, en se libérant, par rapport à l'acheteur, avec simple communication du lieu où les marchandises sont entreposées. Il n'en reste pas moins que pour retirer le lot, l'adjudicataire devra payer, en plus de son prix avec accessoires, le remboursement de tous les autres frais ultérieurs.
- Art. 12** Dans tous les cas, ART CONTACT peut convenir avec les adjudicataires, différentes formes de paiement, dépôt, vente par négociation entre particuliers, assurance de biens et / ou la fourniture de tout autre service demandé pour le déroulement correct de l'opération.
- Art. 13** Toutes les parties concernées sont évidemment tenues de se conformer aux lois en vigueur dans l'Etat où l'enchère a eu lieu. En particulier, ART CONTACT n'assume aucune responsabilité en ce qui concerne les restrictions à l'exportation des lots adjudgés, et/ou en ce qui concerne les licences et/ou permis que l'adjudicataire peut avoir à demander en vertu de la loi applicable. L'adjudicataire ne peut demander aucun remboursement au vendeur ou à ART CONTACT dans le cas où l'Etat exerce son droit de préemption ou tout autre droit qui lui est réservé. Les droits acquis dans le cadre d'une adjudication qui est ensuite annulée en raison du refus d'autoriser l'exportation du lot sont, en tout état de cause, dus par le donneur d'ordre à ART CONTACT, si ce manquement résulte du fait que le donneur d'ordre n'a pas notifié à ART CONTACT l'existence d'une autorisation d'exportation délivrée par l'autorité compétente à la demande du donneur d'ordre.
- Art. 14** En cas de réclamations justifiées et acceptées par ART CONTACT suite à la vente d'objets contrefaits, la Maison de vente aux enchères peut, à sa discrétion, déclarer la nullité de la vente et, sur demande, révéler le nom du vendeur à l'adjudicataire. L'acquéreur ne peut se prévaloir du présent article que dans le cas où il a notifié à ART CONTACT le différend avec la preuve correspondante dans les 15 jours à compter de l'adjudication. En tout état de cause, à la suite d'une plainte acceptée, l'adjudicataire n'aura droit qu'au montant payé pour l'adjudication contestée, sans ajouter d'intérêts ou tout autre montant pour toute autre raison.
- Art. 15** Les présentes conditions générales de vente sont acceptées de plein droit dès la signature du formulaire visé à l'art. 5 et en tout état de cause par tous ceux qui participent à la vente et sont à la disposition de toute personne qui en fait la demande. En cas de litige, le Tribunal de la Principauté de Monaco est compétent.

## GENERAL CONDITIONS OF SALE

- Art. 1** The objects may be sold in Lots or individually according to the final opinion of ART CONTACT SARL (hereafter referred to as ART CONTACT or AUCTION HOUSE). The Auctions will be held in premises that are open to the public by ART CONTACT which acts simply as AGENT in the name and interests of each Seller (the name of the said Seller is written in all the Registers required by Law). The Sale directly concerns the Purchaser and the Seller. ART CONTACT does not assume any responsibility in relation to the Purchaser, the Seller or any Third Party concerned.
- Art. 2** The objects are sold to the highest Bidder for cash. Should any disputes arise among more than one Purchaser, the Auctioneer (his/her decision is final) will put the object up for sale once more so it can be purchased again in the same Sale. In each case, the Purchasers who disputed the former Sale of the object in question are still bound by the initial Bid (which gave rise to the subsequent Sale of the object). Should the subsequent purchase fall through once again the Auctioneer (his/her decision is final) will decide which person may successfully purchase the Lot/s. Each transfer to Third Parties of the Lot/s purchased does not become the responsibility of ART CONTACT which considers the Purchaser as the sole person/s responsible for payment. Bidding at an Auction in the name of and for Third Parties may be accepted by ART CONTACT only after sufficient bank references as well as a power of attorney have been received by the AUCTION HOUSE at least three days before the Auction.
- Art. 3** ART CONTACT reserves the right to withdraw any Lot/s from the Auction. The Auctioneer starts the Auction beginning with the Bid that s/he believes to be the most opportune, based upon both the value of the Lot/s as well as the competing Bids. The Auctioneer may make further Bids or in response to other Bids, until the reserve price is reached. The Auctioneer, during the Auction, may group together or separate Lot/s and vary the order of the Sale. The Auctioneer may – and his/her decision is final – withdraw Lot/s that do not reach the reserve price agreed upon between ART CONTACT and the Seller.
- Art. 4** In addition of the lot's hammer price, the Purchaser will pay ART CONTACT a Buyer's Premium as follows: 22,5% + VAT (27% VAT included)  
For cars:  
14% + VAT (16,80% VAT included) up to 900.000 €  
11% + VAT (13,20% VAT included) over 900.001 €  
Lots from outside EU, marked with the symbol \*\*, are subject to import taxes.  
ART CONTACT being subject to VAT on the Margin Scheme, no document mentions VAT.  
The VAT on Buyer's Premium and importation expenses may be refund to the purchaser on presentation of a written proof of exportation outside the EU.
- Art. 5** In order to guarantee the highest levels of transparency during the Auction for all those who intend to make Bids, prospective Bidders are required to fill out a participation form with personal information and bank details. ART CONTACT reserves the right to make checks on the details/references provided and to refuse those who might not be welcome. Upon completion of the form ART CONTACT will supply a numbered identification paddle which will have to be shown to the Auctioneer in order to proceed with Bidding.
- Art. 6** ART CONTACT may accept absentee Bids (by means both of written as well as telephone Bids) that will be undertaken by the Auctioneer, in direct competition with those present in the Auction Room. Should there be a case of identical Bids, the written Bid will prevail upon the oral Bid.
- Art. 7** Should there be two written Bids that are not beaten by Bids made in the Auction Room or telephone Bids, ART CONTACT will consider the Purchaser to be the one who made the Bid first. ART CONTACT reserves the right to refuse – its decision is final – Bids made by Purchasers who are not known or welcome. ART CONTACT may, however, partially in reference to the above-mentioned, accept Bids if there is a guaranteed sum deposited equal to the value of the Lot that is requested, apart from commissions (buyer's premium), taxes and expenses. In each case, at the moment of Purchase, the Purchaser will immediately inform the AUCTION HOUSE of his/her personal information and taxation details.
- Art. 8** ART CONTACT acts exclusively as the agent for the Sellers and bears no responsibility in terms of descriptions of the objects in the Catalogues or in any other illustrated publication. All the descriptions of objects are intended purely as illustrative and indicative. They may not generate any form of reliance as far as the Purchaser is concerned. The Auction will be preceded by a public viewing of the objects in order to allow for a careful examination of the objects on behalf of aspiring Bidders. In this way, potential Purchasers will have the opportunity to and be responsible for a complete examination of all the qualities of the object/s in question: for example, the authenticity, the state of preservation, the type, the material and the provenance of the objects being auctioned. Following the Purchase, no one will be able to dispute or criticise ART CONTACT or the Sellers for the lack of any form of quality in reference to the object being auctioned. ART CONTACT and its employees/consultants will issue no guarantee of authenticity. All those indications relative to the carats and the weight of metals or precious stones, as well as their relative marks, are merely indicative. ART CONTACT is not responsible for any potential errors or falsifications. Notwithstanding any potential reference to descriptions by experts external to the AUCTION HOUSE, ART CONTACT does not either guarantee the accuracy or the authenticity of such comments.  
The buyer exonerates the auction house from any responsibility for the color reproduction of the objects in the catalogue, which may differ from what perceived by direct sight. Buyers are invited to examine the objects before the auction during the exhibition, in particular it is advisable to ask for photos and conditions reports of the lots in addition to those already illustrated on the website and in the catalogue
- Art. 9** The Estimates relative to the initial sale price, indicated beneath the description of each object in the Catalogue, are intended as NET and do not include, for example, the commissions (buyer's premium), taxes etc. Since the printing time employed for the making of the Catalogue requires price Estimates in advance, these latter may be subject to change, as may also the description of the object. Each and every change will be communicated to the Auctioneer before the beginning of the Auction in relation to each object concerned. The Lot/s will, however, only be sold upon reaching the reserve price.
- Art. 10** The entire payment of the hammer price, the commissions applied (buyer's premium) as well as all other expenses must be paid for within ten working days of the Auction date, in the legal currency of the State in which the Auction has taken place. In the case of lack of due payment, after full compensation of damages made to ART CONTACT, the AUCTION HOUSE may:  
return the object to the Seller and demand full payment from the Purchaser of the due commissions/premium;  
undertake action in order to forcefully obtain the obligations of purchase;  
sell the Lot/s privately or in subsequent Auctions, to the disadvantage of the original Purchaser, treating any sums paid by the latter as a form of sanction. If the Lot/s is kept by ART CONTACT this will be at the risk and expense of the Purchaser and the original Seller. In each case, until the collection or return dates the Purchaser will pay ART CONTACT the costs of storage (by month or parts of month) as follows: 100 euro + vat for furniture, 50 euro + vat for paintings, 20 euro + vat for objects. This sum must be paid from the sixteenth day following the Auction.
- Art. 11** The Purchaser, after having paid all the sums due, must collect the Lot/s acquired within fifteen working days of the Auction date, at his/her own risk and expense, in full consideration of the opening hours of ART CONTACT. Should the Purchaser not collect the Lot/s during the above-mentioned times ART CONTACT will keep them at the risk and expense of the Purchaser in the AUCTION HOUSE for a further five working days. Once this period has passed, ART CONTACT will remove the object/s (at the Purchaser's own risk and expense) to the storage space deemed most appropriate by the AUCTION HOUSE. The AUCTION HOUSE will inform the Purchaser of the place where the object/s are kept. Let it be clearly understood that in order to collect the object/s the Purchaser will have to pay, apart from the price plus commissions (buyer's premium) etc, any refund due to subsequent expenses incurred by the AUCTION HOUSE.
- Art. 12** In each case, ART CONTACT may agree with the Purchaser/s upon different forms of payment, storage, private sale, insurance of the object/s and/or granting of any other service requested in order to achieve the most successful results possible.
- Art. 13** Everybody has, obviously, to respect the current Laws within the State where the Auction is held. In particular, ART CONTACT assumes no responsibility in relation to potential restrictions concerning the export of purchased objects and/or in relation to licenses or permits that the Purchaser might have to request on the basis of current Laws. The Purchaser will not be able to request any refund either from the Seller or from ART CONTACT should the State exercise its right to pre-emption or any other right it may possess. The rights that have matured in relation to the hammer price of a sale that has been annulled on account of it not receiving authorization for export due to the lack of agreement of the cultural authorities concerned are, nevertheless, to be paid by the vendor to ART CONTACT if permission was not given because the vendor did not previously inform ART CONTACT of the existence of authorization (for export) given by the relevant authority upon the request of the vendor him/herself.
- Art. 14** In the case of disputes that are revealed to be well-founded and accepted by ART CONTACT subsequent to the sale of false objects, the AUCTION HOUSE may, at its own discretion, declare the sale null and void and, if requested, reveal the name of the Seller to the Purchaser. The Purchaser may make use of this Article (Article 14) only and exclusively in the case that s/he has notified ART CONTACT – according to Articles 137 and following in the Code of Civil Procedure – of the dispute in question with the relative proof within fifteen days of the Auction date. In each case, subsequent to an accepted claim the Purchaser has the right to receive exclusively what was paid as the disputed hammer price without the addition of interests or other sums for any other reason.
- Art. 15** The current Sale Conditions are accepted automatically upon signing the form (see Article 5) and by all those individuals who take part in the Sale. The above-mentioned Conditions are at the disposal of any individual who requests to see them. Any case of controversy is within the jurisdiction of the Principality of Monaco.

ORDRE D'ACHAT /ABSENTEE BIDS FORM

JE SOUSSIGNÉ

PRÉNOM/NOM

NAME/SURNAME

ADRESSE

ADDRESS

VILLE

CODE POSTAL

ÉTAT

TOWN

ZIP CODE

COUNTRY

TÉLÉPHONE/FAX

COURRIEL

PHONE/FAX

E MAIL

JE JOINS À CE FORMULAIRE UNE COPIE DE MA PIÈCE D'IDENTITÉ OU PASSEPORT

I PROVIDE A COPY OF MY ID OR PASSPORT

J'AUTORISE ART CONTACT - WANNENES À ENVOYER DES LETTRES D'INFORMATIONS ET TOUTES COMMUNICATIONS PUBLICITAIRES À L'ADRESSE EMAIL INDIQUÉE CI-DESSUS

J'autorise Art Contact - Wannenes à faire des offres en mon nom et à ma demande pour l'achat des lots listés ci-dessous jusqu'au prix maximum (plus les commissions, taxes et/ou frais et tout ce qui est dû) indiqué pour chacun d'eux, et/ou à me contacter par téléphone lorsque les lots énumérés ci-après seront mis en vente, au numéro de téléphone que j'ai indiqué. Je déclare comprendre et accepter les conditions générales de vente imprimées dans le catalogue et exonère expressément Art Contact . Wannenes de toute responsabilité pour les offres qui, pour quelque raison que ce soit, n'ont pas été faites en tout ou en partie et/ou pour les appels qui n'ont pas été effectués, même pour des raisons dépendant directement de Art Contact - Wannenes. Je déclare également savoir et accepter qu'en cas d'attribution, les données indiquées dans le présent formulaire seront celles qui figureront sur la facture et ne seront plus modifiées.

Date ..... Heure ..... Signature.....

RAPPEL DES CONDITIONS GÉNÉRALES DE VENTE ET POINTS DIVERS

- 1. Cette liste ne doit pas être considérée comme exhaustive, mais simplement à titre d'exemple ; le participant à la vente aux enchères a déjà lu les conditions générales de vente, qu'il a déclaré avoir compris et accepté dans leur intégralité.
2. En cas d'égalité entre une offre écrite et une offre dans la salle, l'offre écrite prévaut.
3. En cas d'égalité entre plusieurs offres écrites, la première offre écrite prévaut, à condition qu'elle soit formulée intégralement (y compris les garanties bancaires).
4. Le demandeur est pleinement conscient que le prix d'achat final sera composé de la somme offerte plus les frais de vente aux enchères et toutes les taxes et droits y afférents, ainsi que toutes les dépenses clairement indiquées dans le catalogue.
5. Art Contact - Wannenes s'engage à chercher de réaliser votre achat au prix le plus bas possible.

Conformément aux dispositions de la loi n° 1.165 du 23 décembre 1993 relative à la protection des informations nominatives, modifiée, Art Contact / Wannenes s'engage à préserver la confidentialité des informations nominatives fournies par les clients dans le cadre de participation aux enchères , demandes d'informations ou leur abonnement aux « Newsletters » .

Signature .....

CE FORMULAIRE NE SERA CONSIDÉRÉ COMME VALIDE QUE S'IL EST REÇU PAR E-MAIL OU PAR FAX AU MOINS SEPT HEURES AVANT LE DÉBUT DE L'ENCHÈRE.

THIS FORM WILL BE ACCEPTED ONLY IF RECEIVED BY E-MAIL OR FAX AT LEAST SEVEN HOURS BEFORE THE BEGINNING OF THE AUCTION

NOUS N'ACCEPTONS PAS LES OFFRES TÉLÉPHONIQUES EN DESSOUS DE L'ESTIMATION MAXIMALE DE 500 EUROS TELEPHONE BIDS LOWER THAN 500 EURO WILL NOT BE ACCEPTED

LA DEMANDE DE PARTICIPATION PAR TÉLÉPHONE IMPLIQUE L'ACCEPTATION DE L'OFFRE DU PRIX DE BASE.

THE REQUEST OF TELEPHONE BIDDING IMPLIES THE ACCEPTANCE OF A BID AT THE STARTING PRICE.

NOUS NE POUVONS ACCEPTER DES OFFRES INFÉRIEURES AU PRIX MINIMUM D'ESTIMATION WE CANNOT ACCEPT BIDS LOWER THAN THE MINIMUM PRICE

info@artcontactmonaco.com

ORDRE D'ACHAT /ABSENTEE BIDS FORM

JE SOUSSIGNÉ
PRÉNOM/NOM
NAME/SURNAME

POUR LES DEMANDES DE PARTICIPATION PAR TÉLÉPHONE VEUILLEZ INDIQUER LE NUMÉRO DE LOT, LA DESCRIPTION ET LE NUMÉRO DE TÉLÉPHONE.
PHONE DURING THE AUCTION: PLEASE INDICATE LOT NUMBER, DESCRIPTION AND PHONE NUMBER.

Table with 3 columns: LOT, DESCRIPTION, OFFRE MAXIMALE/TÉLÉPHONE MAXIMUM BID/TELEPHONE. Multiple empty rows for bidding entries.

Date ..... Signature .....

CE FORMULAIRE NE SERA CONSIDÉRÉ COMME VALIDE QUE S'IL EST REÇU PAR E-MAIL OU PAR FAX AU MOINS SEPT HEURES AVANT LE DÉBUT DE L'ENCHÈRE.

THIS FORM WILL BE ACCEPTED ONLY IF RECEIVED BY E-MAIL OR FAX AT LEAST SEVEN HOURS BEFORE THE BEGINNING OF THE AUCTION

NOUS N'ACCEPTONS PAS LES OFFRES TÉLÉPHONIQUES EN DESSOUS DE L'ESTIMATION MAXIMALE DE 500 EUROS TELEPHONE BIDS LOWER THAN 500 EURO WILL NOT BE ACCEPTED

LA DEMANDE DE PARTICIPATION PAR TÉLÉPHONE IMPLIQUE L'ACCEPTATION DE L'OFFRE DU PRIX DE BASE.

THE REQUEST OF TELEPHONE BIDDING IMPLIES THE ACCEPTANCE OF A BID AT THE STARTING PRICE.

NOUS NE POUVONS ACCEPTER DES OFFRES INFÉRIEURES AU PRIX MINIMUM D'ESTIMATION WE CANNOT ACCEPT BIDS LOWER THAN THE MINIMUM PRICE

info@artcontactmonaco.com

Photography  
Michele Rosa

Graphic Design  
Crea Graphic Design  
[www.crea.ge.it](http://www.crea.ge.it)

Printed in Italy - July 2023

lot 516







WANNENES

[wannenesgroup.com](http://wannenesgroup.com)